

Concord



ASCENT 150 II LED

EFFICIENT PERFORMANCE

Concord was the original designer and manufacturer of architectural downlights.

With over 40 years experience in downlighter technology, Concord introduces the Ascent 150 II once again redefining the genre of Low Energy Downlights.

The new Ascent 150 II incorporates a dedicated very high efficient LED board which gives up to fixture 131lm/W and a low glare version according to EN12464-1 for office spaces.

Ascent 150 II Round

FEATURES

- A very high efficient round downlight up to 127lm/W
- Long life >50,000
- 4,000K and 3,000K CCT and CRI Ra85
- IP44 rated for wet areas and bathrooms
- UGR <19 version for offices to comply with EN12464-1
- Wide selection of decorative accessories

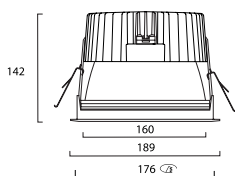


aluminium reflector



SKU	Description	Colour temp (K)	Lumen output (lm)	Power Consumption (W)	Efficacy (lm/W)	Voltage (V)	Recessed Depth (mm)	Cutout Dimensions (W x L in mm)	Diameter (mm)	Glow Wire Test (°C)	life (hours)	Lamp Energy Class
Ascent 150 II - Round												
2059340	ASCENT 150 II 1100 3K STD	3000	1123	10	113	220-240	142	176	189	650°C	50,000	A++,A+, A
2059341	ASCENT 150 II 1100 3K DALI	3000	1123	10	113	220-240	142	176	189	650°C	50,000	A++,A+, A
2059342	ASCENT 150 II 1100 3K STD EM	3000	1123	10	113	220-240	142	176	189	650°C	50,000	A++,A+, A
2059343	ASCENT 150 II 1100 3K DALI EM	3000	1123	10	113	220-240	142	176	189	650°C	50,000	A++,A+, A
2059344	ASCENT 150 II 1200 4K STD	4000	1215	10	123	220-240	142	176	189	650°C	50,000	A++,A+, A
2059345	ASCENT 150 II 1200 4K DALI	4000	1215	10	123	220-240	142	176	189	650°C	50,000	A++,A+, A
2059346	ASCENT 150 II 1200 4K STD EM	4000	1215	10	123	220-240	142	176	189	650°C	50,000	A++,A+, A
2059347	ASCENT 150 II 1200 4k DALI EM	4000	1215	10	123	220-240	142	176	189	650°C	50,000	A++,A+, A
2059348	ASCENT 150 II 1600 3K STD	3000	1600	14	113	220-240	142	176	189	650°C	50,000	A++,A+, A
2059349	ASCENT 150 II 1600 3K DALI	3000	1600	14	113	220-240	142	176	189	650°C	50,000	A++,A+, A
2059350	ASCENT 150 II 1600 3K STD EM	3000	1600	14	113	220-240	142	176	189	650°C	50,000	A++,A+, A
2059351	ASCENT 150 II 1600 3K DALI EM	3000	1600	14	113	220-240	142	176	189	650°C	50,000	A++,A+, A
2059352	ASCENT 150 II 1700 4K STD	4000	1738	14	122	220-240	142	176	189	650°C	50,000	A++,A+, A
2059353	ASCENT 150 II 1700 4K DALI	4000	1738	14	122	220-240	142	176	189	650°C	50,000	A++,A+, A
2059354	ASCENT 150 II 1700 4K STD EM	4000	1738	14	122	220-240	142	176	189	650°C	50,000	A++,A+, A
2059355	ASCENT 150 II 1700 4k DALI EM	4000	1738	14	122	220-240	142	176	189	650°C	50,000	A++,A+, A
2059356	ASCENT 150 II 2200 3K STD	3000	2246	19	118	220-240	142	176	189	650°C	50,000	A++,A+, A
2059357	ASCENT 150 II 2200 3K DALI	3000	2246	19	118	220-240	142	176	189	650°C	50,000	A++,A+, A
2059358	ASCENT 150 II 2200 3K STD EM	3000	2246	19	118	220-240	142	176	189	650°C	50,000	A++,A+, A
2059359	ASCENT 150 II 2200 3K DALI EM	3000	2246	19	118	220-240	142	176	189	650°C	50,000	A++,A+, A
2059360	ASCENT 150 II 2400 4K STD	4000	2414	19	127	220-240	142	176	189	650°C	50,000	A++,A+, A
2059361	ASCENT 150 II 2400 4K DALI	4000	2414	19	127	220-240	142	176	189	650°C	50,000	A++,A+, A
2059362	ASCENT 150 II 2400 4K STD EM	4000	2414	19	127	220-240	142	176	189	650°C	50,000	A++,A+, A
2059363	ASCENT 150 II 2400 4k DALI EM	4000	2414	19	127	220-240	142	176	189	650°C	50,000	A++,A+, A
2059364	ASCENT 150 II 3200 3K STD	3000	3250	28	116	220-240	142	176	189	650°C	50,000	A++,A+, A
2059365	ASCENT 150 II 3200 3K DALI	3000	3250	28	116	220-240	142	176	189	650°C	50,000	A++,A+, A
2059366	ASCENT 150 II 3200 3K STD EM	3000	3250	28	116	220-240	142	176	189	650°C	50,000	A++,A+, A
2059367	ASCENT 150 II 3200 3K DALI EM	3000	3250	28	116	220-240	142	176	189	650°C	50,000	A++,A+, A
2059368	ASCENT 150 II 3400 4K STD	4000	3435	28	123	220-240	142	176	189	650°C	50,000	A++,A+, A
2059369	ASCENT 150 II 3400 4K DALI	4000	3435	28	123	220-240	142	176	189	650°C	50,000	A++,A+, A
2059370	ASCENT 150 II 3400 4K STD EM	4000	3435	28	123	220-240	142	176	189	650°C	50,000	A++,A+, A
2059371	ASCENT 150 II 3400 4k DALI EM	4000	3435	28	123	220-240	142	176	189	650°C	50,000	A++,A+, A
2059446	ASCENT 150 II 2100 3K DALI WHT	3000	2082	19	110	220-240	142	176	189	650°C	50,000	A++,A+, A
2059447	ASCENT 150 II 3100 3K DALI WHT	3000	2967	28	106	220-240	142	176	189	650°C	50,000	A++,A+, A
2059448	ASCENT 150 II 2100 4K DALI WHT	4000	2413	19	127	220-240	142	176	189	650°C	50,000	A++,A+, A
2059449	ASCENT 150 II 3100 4K DALI WHT	4000	3403	28	122	220-240	142	176	189	650°C	50,000	A++,A+, A
2059450	ASCENT150II 3100 4K DALIEM WHT	4000	3403	28	122	220-240	142	176	189	650°C	50,000	A++,A+, A
2059445	Ascent 150 II Office 3K DALI	3000	2052	22	93	220-240	142	176	189	650°C	50,000	A++,A+, A

Dimension (mm)

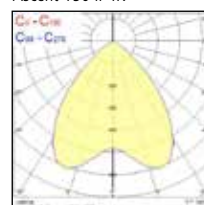


Photometric Data

Ascent 150 II 3K



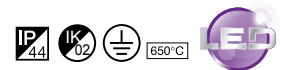
Ascent 150 II 4K



Ascent 150 II Round Wallwash

FEATURES

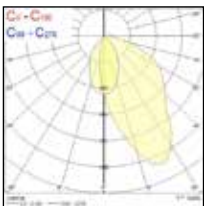
- A very high efficient round downlight up to 127lm/W
- Long life >50,000
- 4,000K and 3,000K CCT and CRI Ra85
- IP44 rated for wet areas and bathrooms
- UGR <19 version for offices to comply with EN12464-1
- Wide selection of decorative accessories



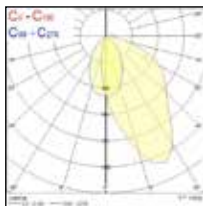
SKU	Description	Colour temp (K)	Lumen output (lm)	Power Consumption (W)	Efficacy (lm/W)	Voltage (V)	Recessed Depth (mm)	Cutout Dimensions (W x L in mm)	Diameter (mm)	Glow Wire Test (°C)	life (hours)	Lamp Energy Class
Ascent 150 II - Round Wallwash												
2059372	ASCENT 150 II WW 1600 3K STD	3000	1613	14	114	220-240	180	235	248	650°C	50,000	A++,A+, A
2059373	ASCENT 150 II WW 1600 3K DALI	3000	1613	14	114	220-240	180	235	248	650°C	50,000	A++,A+, A
2059374	ASCENT 150 II WW 1700 4K STD	4000	1718	14	121	220-240	180	235	248	650°C	50,000	A++,A+, A
2059375	ASCENT 150 II WW 1700 4K DALI	4000	1718	14	121	220-240	180	235	248	650°C	50,000	A++,A+, A
2059376	ASCENT 150 II WW 3200 3K STD	3000	3222	28	115	220-240	180	235	248	650°C	50,000	A++,A+, A
2059377	ASCENT 150 II WW 3200 3K DALI	3000	3222	28	115	220-240	180	235	248	650°C	50,000	A++,A+, A
2059378	ASCENT 150 II WW 3400 4K STD	4000	3405	28	122	220-240	180	235	248	650°C	50,000	A++,A+, A
2059379	ASCENT 150 II WW 3400 4K DALI	4000	3405	28	122	220-240	180	235	248	650°C	50,000	A++,A+, A

Photometric Data

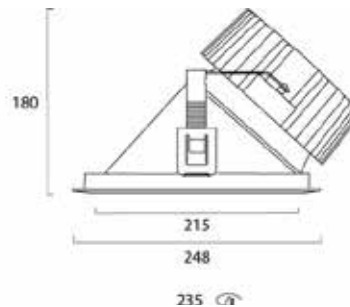
Ascent 150 II WW 3K



Ascent 150 II WW 4K



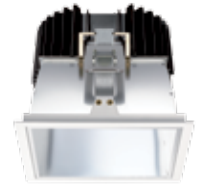
Dimension (mm)



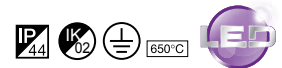
Ascent 150 II Square

FEATURES

- A very high efficient square downlight up to 131lm/W
- Long life >50,000
- 4,000K and 3,000K CCT and CRI Ra85
- IP44 rated for wet areas and bathrooms



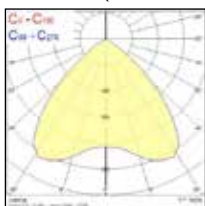
Aluminium



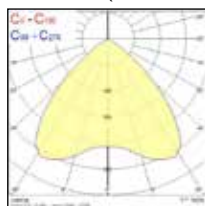
SKU	Description	Colour temp (K)	Lumen output (lm)	Power Consumption (W)	Efficacy (lm/W)	Voltage (V)	Recessed Depth (mm)	Cutout Dimensions (W x L in mm)	Diameter (mm)	Glow Wire Test (°C)	life (hours)	Lamp Energy Class
Ascent 150 II - Square												
2059380	ASCENT 150 II Q 1100 3K STD	3000	1163	10	117	220-240	158	176	189	650°C	50,000	A++,A+, A
2059381	ASCENT 150 II Q 1100 3K DALI	3000	1163	10	117	220-240	158	176	189	650°C	50,000	A++,A+, A
2059382	ASCENT 150 II Q 1100 3K STD EM	3000	1163	10	117	220-240	158	176	189	650°C	50,000	A++,A+, A
2059383	ASCENT 150 II Q 1100 3K DALI EM	3000	1163	10	117	220-240	158	176	189	650°C	50,000	A++,A+, A
2059384	ASCENT 150 II Q 1200 4K STD	4000	1246	10	126	220-240	158	176	189	650°C	50,000	A++,A+, A
2059385	ASCENT 150 II Q 1200 4K DALI	4000	1246	10	126	220-240	158	176	189	650°C	50,000	A++,A+, A
2059386	ASCENT 150 II Q 1200 4K STD EM	4000	1246	10	126	220-240	158	176	189	650°C	50,000	A++,A+, A
2059387	ASCENT 150 II Q 1200 4K DALI EM	4000	1246	10	126	220-240	158	176	189	650°C	50,000	A++,A+, A
2059388	ASCENT 150 II Q 1600 3K STD	3000	1600	14	113	220-240	158	176	189	650°C	50,000	A++,A+, A
2059389	ASCENT 150 II Q 1600 3K DALI	3000	1600	14	113	220-240	158	176	189	650°C	50,000	A++,A+, A
2059390	ASCENT 150 II Q 1600 3K STD EM	3000	1600	14	113	220-240	158	176	189	650°C	50,000	A++,A+, A
2059391	ASCENT 150 II Q 1600 3K DALI EM	3000	1600	14	113	220-240	158	176	189	650°C	50,000	A++,A+, A
2059392	ASCENT 150 II Q 1700 4K STD	4000	1778	14	125	220-240	158	176	189	650°C	50,000	A++,A+, A
2059393	ASCENT 150 II Q 1700 4K DALI	4000	1778	14	125	220-240	158	176	189	650°C	50,000	A++,A+, A
2059394	ASCENT 150 II Q 1700 4K STD EM	4000	1778	14	125	220-240	158	176	189	650°C	50,000	A++,A+, A
2059395	ASCENT 150 II Q 1700 4k DALI EM	4000	1778	14	125	220-240	158	176	189	650°C	50,000	A++,A+, A
2059396	ASCENT 150 II Q 2300 3K STD	3000	2322	19	122	220-240	158	176	189	650°C	50,000	A++,A+, A
2059397	ASCENT 150 II Q 2300 3K DALI	3000	2322	19	122	220-240	158	176	189	650°C	50,000	A++,A+, A
2059398	ASCENT 150 II Q 2300 3K STD EM	3000	2322	19	122	220-240	158	176	189	650°C	50,000	A++,A+, A
2059399	ASCENT 150 II Q 2300 3K DALI EM	3000	2322	19	122	220-240	158	176	189	650°C	50,000	A++,A+, A
2059400	ASCENT 150 II Q 2400 4K STD	4000	2483	19	131	220-240	158	176	189	650°C	50,000	A++,A+, A
2059401	ASCENT 150 II Q 2400 4K DALI	4000	2483	19	131	220-240	158	176	189	650°C	50,000	A++,A+, A
2059402	ASCENT 150 II Q 2400 4K STD EM	4000	2483	19	131	220-240	158	176	189	650°C	50,000	A++,A+, A
2059403	ASCENT 150 II Q 2400 4k DALI EM	4000	2483	19	131	220-240	158	176	189	650°C	50,000	A++,A+, A
2059404	ASCENT 150 II Q 3200 3K STD	3000	3284	28	117	220-240	158	176	189	650°C	50,000	A++,A+, A
2059405	ASCENT 150 II Q 3200 3K DALI	3000	3284	28	117	220-240	158	176	189	650°C	50,000	A++,A+, A
2059406	ASCENT 150 II Q 3200 3K STD EM	3000	3284	28	117	220-240	158	176	189	650°C	50,000	A++,A+, A
2059407	ASCENT 150 II Q 3200 3K DALI EM	3000	3284	28	117	220-240	158	176	189	650°C	50,000	A++,A+, A
2059408	ASCENT 150 II Q 3500 4K STD	4000	3512	28	125	220-240	158	176	189	650°C	50,000	A++,A+, A
2059409	ASCENT 150 II Q 3500 4K DALI	4000	3512	28	125	220-240	158	176	189	650°C	50,000	A++,A+, A
2059410	ASCENT 150 II Q 3500 4K STD EM	4000	3512	28	125	220-240	158	176	189	650°C	50,000	A++,A+, A
2059411	ASCENT 150 II Q 3500 4k DALI EM	4000	3512	28	125	220-240	158	176	189	650°C	50,000	A++,A+, A

Photometric Data

Ascent 150 II Q 3K



Ascent 150 II Q 4K



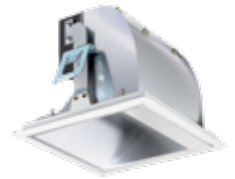
Dimension (mm)



Ascent 150 Square Wallwash

FEATURES

- A unique square wallwasher downlight
- Provides excellent vertical illuminance
- Same ceiling cut out as Ascent 150 Square
- CRI Ra85



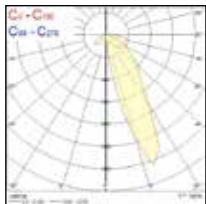
Ascent 150 Q



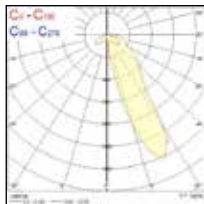
SKU	Description	Colour temp (K)	Lumen output (lm)	Power Consumption (W)	Efficacy (lm/W)	Voltage (V)	Recessed Depth (mm)	Cutout Dimensions (W x L in mm)	Diameter (mm)	Glow Wire Test (°C)	life (hours)	Lamp Energy Class
Ascent 150 - Square Wallwash												
2055986	ASCENT 150 QWW 850 3K STD	3000	896	17	53	220-240	180	235	248	650°C	50,000	A++,A+, A
2055987	ASCENT 150 QWW 850 3K DALI	3000	896	17	53	220-240	180	235	248	650°C	50,000	A++,A+, A
2055988	ASCENT 150 QWW 900 4K STD	4000	906	17	53	220-240	180	235	248	650°C	50,000	A++,A+, A
2055989	ASCENT 150 QWW 900 4K DALI	4000	906	17	53	220-240	180	235	248	650°C	50,000	A++,A+, A
2055990	ASCENT 150 QWW 1000 3K STD	3000	1174	22	53	220-240	180	235	248	650°C	50,000	A++,A+, A
2055991	ASCENT 150 QWW 1000 3K DALI	3000	1174	22	53	220-240	180	235	248	650°C	50,000	A++,A+, A
2055992	ASCENT 150 QWW 1100 4K STD	4000	1195	22	54	220-240	180	235	248	650°C	50,000	A++,A+, A
2055993	ASCENT 150 QWW 1100 4K DALI	4000	1195	22	54	220-240	180	235	248	650°C	50,000	A++,A+, A
2055994	ASCENT 150 QWW 1400 3K STD	3000	1521	30	51	220-240	180	235	248	650°C	50,000	A++,A+, A
2055995	ASCENT 150 QWW 1400 3K DALI	3000	1521	30	51	220-240	180	235	248	650°C	50,000	A++,A+, A
2055996	ASCENT 150 QWW 1500 4K STD	4000	1557	30	52	220-240	180	235	248	650°C	50,000	A++,A+, A
2055997	ASCENT 150 QWW 1500 4K DALI	4000	1557	30	52	220-240	180	235	248	650°C	50,000	A++,A+, A

Photometric Data

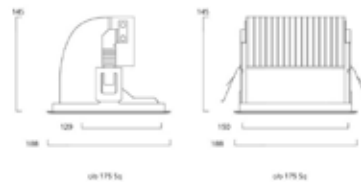
Ascent 150 II Q WW 3K



Ascent 150 II Q WW 4K



Dimension (mm)



Ascent 150 Accessories (not for Wallwasher models)

Round

Code	Description	Weight (Kg)	Colour
Ascent 150 II Round Accessories			
2028614	Bezel Only	0.11	White Bezel
2028034	Clear Glass IP44 Cover	0.2	White Bezel
2028036	Etched Glass IP44 Cover	0.2	White
2039013	Polycarbonate IP54 Cover	0.18	White
2038980	Floating Frosted Glass Ring	0.5	White Bezel
2038984	Floating Glass Ring Blue Gel	0.5	White Bezel
2039021	Floating Profile Cut Glass Disc	0.56	White
2028060	Floating Glass Disc Fully Etched	0.45	White
2034493	Floating Frosted Cylinder Blue Ring	0.16	White
2028549	Floating Frosted Cylinder Clear Ring	0.16	White
2028038	Bezel Only	0.11	Silver Bezel
2028600	Clear Glass IP44 Cover	0.2	Silver Bezel
2028602	Etched Glass IP44 Cover	0.2	Silver
2028608	Floating Glass Disc Fully Etched	0.45	Silver
2028612	Floating Frosted Cylinder Clear Ring	0.16	Silver

Order separately

Code	Description
Ascent 150 Plaster Up Accessories	
2056146	ASNT150 PL UP RD SIL ACC
2056147	ASNT150 PL UP RD WHT ACC
2056148	ASNT150 PL UP RD BLK ACC



Silver Bezel

White Bezel + IP54 Vandal Resistant Cover

White Bezel + IP44 Glass Cover

Floating Glass Ring Blue Gel



Floating Profile Cut Glass Disc

Floating Frosted Glass Ring

Floating Frosted Cylinder Blue Ring



2056146

2056147

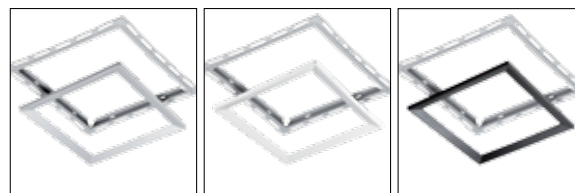
2056148

2059446 and 2056147

Square

Code	Description	Colour
Ascent 150 II Square Accessories		
2056149	ASNT150 PL UP SQ SIL ACC	Silver
2056150	ASNT150 PL UP SQ WHT ACC	White
2056151	ASNT150 PL UP SQ BLK ACC	Black
2055782	ASNT150 SQ DROP GLASS	-
2055783	ASNT150 SQ KOMETA	-

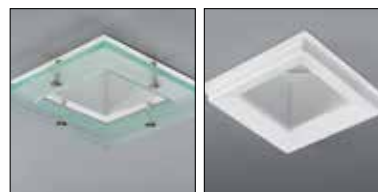
Accessories not for wallwasher



2056149

2056150

2056151



2055782

2055783