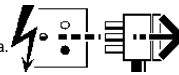
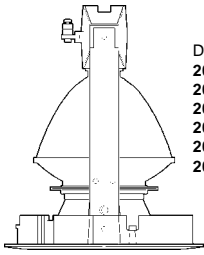




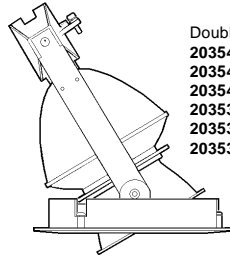
Disconnect from mains supply before replacing the fuse or the lamp.
 Vor dem Einsetzen der Sicherung oder der Lampe Spannungsfreiheit herstellen.
Débrancher le secteur avant de remplacer le fusible ou l'ampoule.
 Desconectar del suministro de la red, antes de realizar la sustitución del fusible o de la lámpara.
Voor het vervangen van lamp of zekering, eerst netspanning uitschakelen.
 Koppla bort spänningen före byte av en säkring eller en lampa.



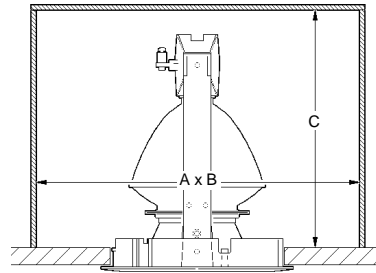
Switch Off
 Abschalten
Débrancher
 Desconectar
Uitschakelen
 Stäng av



Double Focus
 2035403 2035405
 2035407 2035404
 2035406 2035408
 2035376 2035378
 2035381 2035377
 2035380 2035382

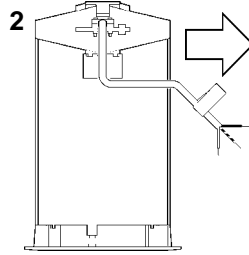
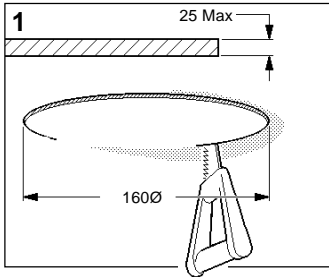


Double Focus Tilt
 2035410 2035412
 2035414 2035411
 2035413 2035415
 2035383 2035385
 2035387 2035384
 2035386 2035388



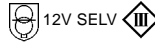
NO INSULATION

 A = 500
 B = 350
 C = 245

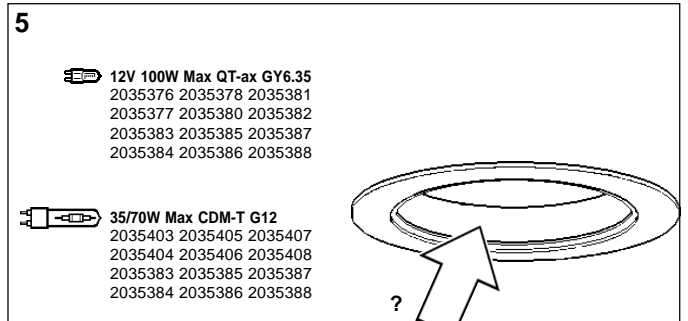
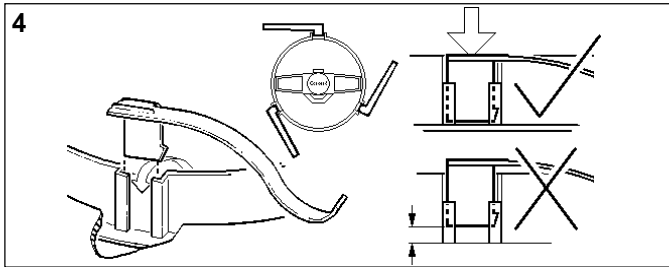
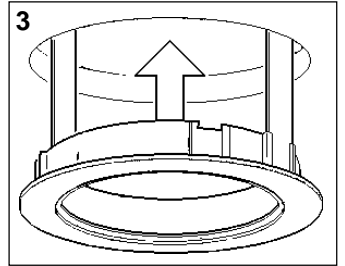


*2035403 2035405 2035407 2035404 2035406 2035408
 2035383 2035385 2035387 2035384 2035386 2035388
35/70W CDM-T
 This fitting will not work without control gear.
 Leuchte nur mit V.G. in separatem gehäuse betrieben.
 Luminaire ne fonctionne qu'avec ballast.

2035376 2035378 2035381 2035377 2035380 2035382
 2035383 2035385 2035387 2035384 2035386 2035388
12V 100W QT

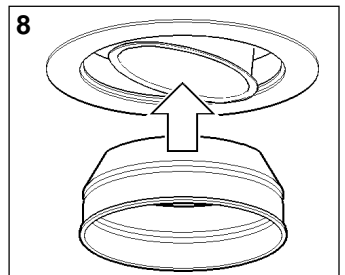
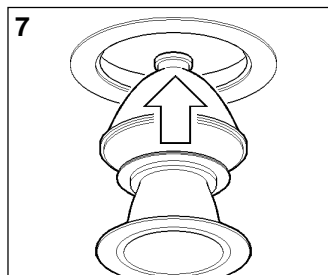
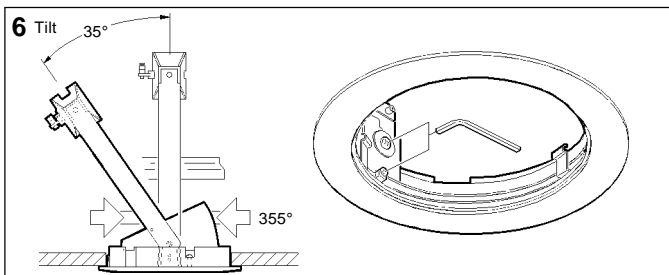
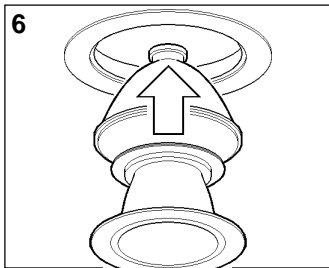
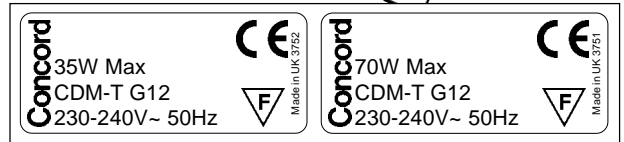


* These Products **MUST** be EARTHED

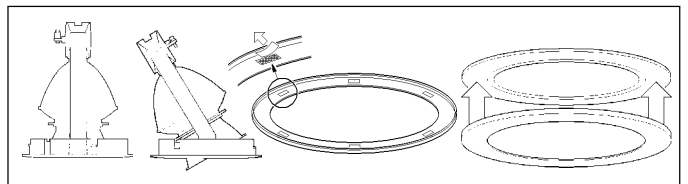


2035376 2035378 2035381
 2035377 2035380 2035382
 2035383 2035385 2035387
 2035384 2035386 2035388

2035403 2035405 2035407
 2035404 2035406 2035408
 2035383 2035385 2035387
 2035384 2035386 2035388



2035013 2035030



Suitable for use indoors
 Geeignet für Innenanwendung
 Pour un usage interne
 Adecuada para uso en interiores
 Geschikt voor gebruik binnen
 Lämplig för inomhusbruk



Replace any cracked protective shield.

Dieses symbol bedeutet, dass defekte Schutzgläser sofort ersetzt werden müssen.

Ce symbole indique que vous devez remplacer tout verre de protection fêlé.

Este símbolo indica que hay que reemplazar filtros en caso de rotura o desperfectos.

Dette symbolet indikerer at alle ødelagte (sprukne) sikkerhetglass må skiftes.

Valaisinta ei saa käyttää ilman suojalasia vioitunut suojalasi on vaihdettava uuteen ennen valaisimen käyttöön ottoa.

< Millimetres >



This Electrical Product **MUST** be recycled.



07.08

Concord

Avis Way Newhaven East Sussex BN9 0ED
 T 0870 606 2030 F 01273 512 688 email: information@concordmarlin.com

