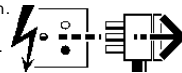




Wiring Instructions for all modules with:  
DALI, DSI, or SWITCH  
dimming systems.

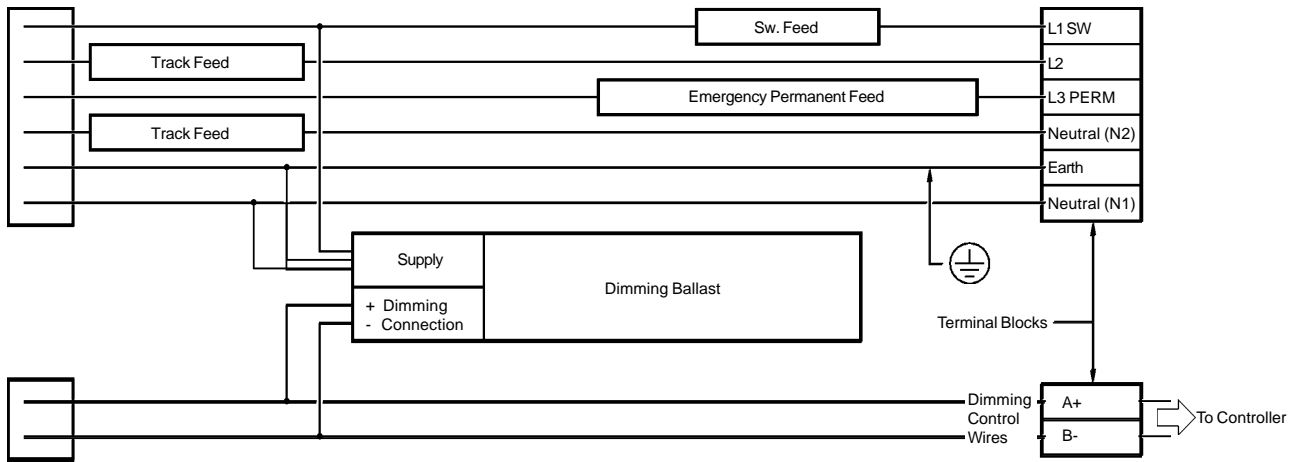
**Disconnect from mains supply before replacing the fuse or the lamp.**  
Vor dem Einsetzen der Sicherung oder der Lampe Spannungsfreiheit herstellen.  
**Débrancher le secteur avant de remplacer le fusible ou l'ampoule.**  
Desconectar del suministro de la red, antes de realizar la sustitución del fusible o de la lámpara.  
**Voor het vervangen van lamp of zekering, eerst netspanning uitschakelen.**  
Koppla bort spänningen före byte av en säkring eller en lampa.



**Switch Off**  
Abschalten  
**Débrancher**  
Desconectar  
**Uitschakelen**  
Stäng av

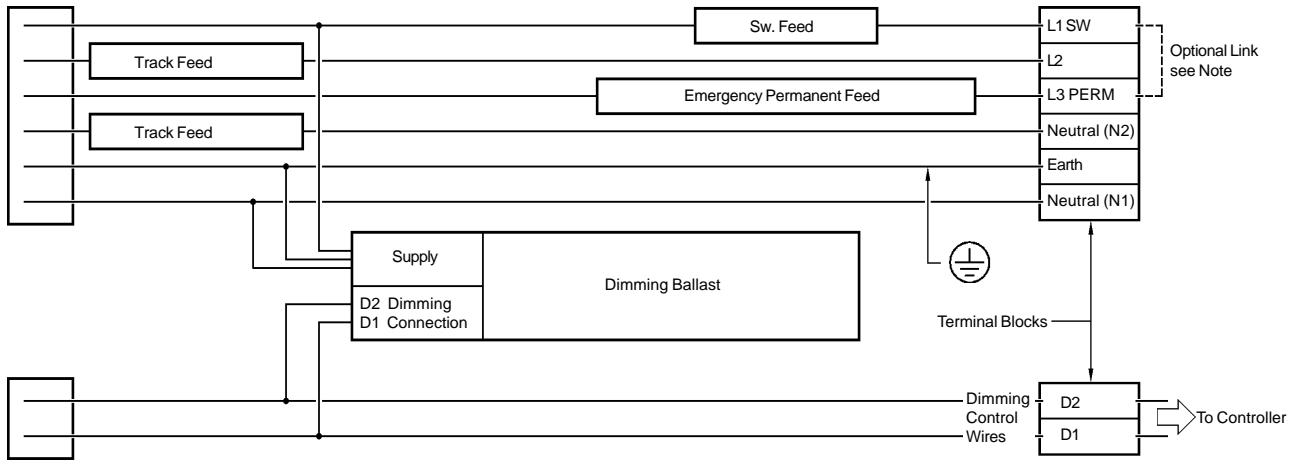
**Wiring Schematic for 1-10V Dimming.**

Connect switched supply to terminals L1 and N1. Connect cables from the 1-10V dimmer to terminals A and B. Ensure that the correct polarity is observed A to + and B to -. Incorrect polarity will result in reduced output and no dimming capacity



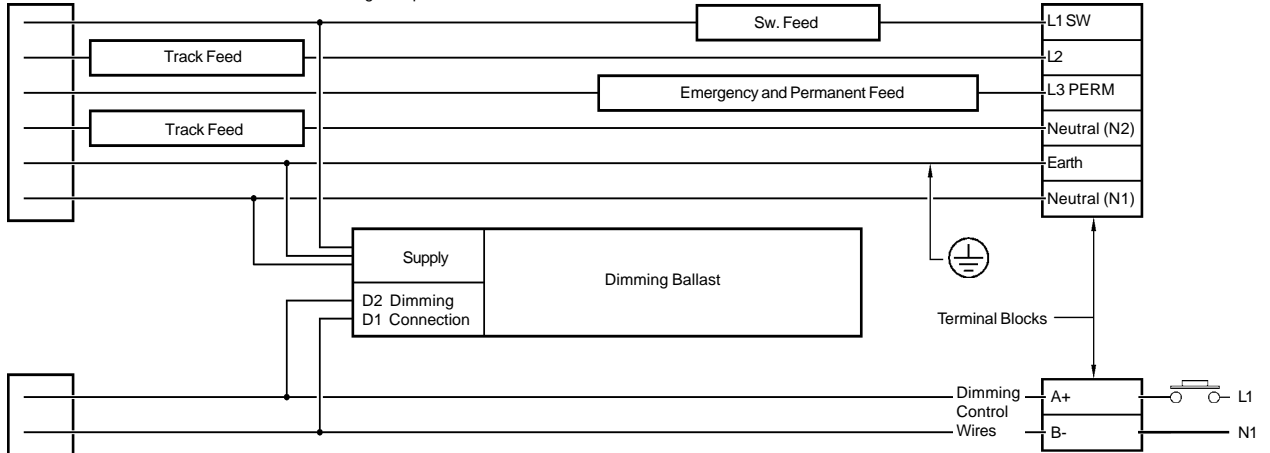
**Wiring Schematic for DSI and DALI Dimming**

Connect supply terminals L1 and N1. Connect cables from A and B to the output of the DSI/Dali controller.  
Note: For permanent supply operation of DSI and DALI ballasts, connect the unswitched supply by linking terminals L1 and L3 on the luminaire.



**Wiring Schematic for Switch Dimming.**

Connect supply terminals L1 and N1. Connect cable from Terminal B to Neutral (N1). Connect Cable from Terminal A to 'Open' terminal of retractable switch (Push to Make) and connect 'Common' to the supply phase (L1) in order to synchronise luminaires, turn Off supply to all luminaires for 5 seconds, reconnect supply and push the retractable switch until all luminaires reach full light output.



Suitable for use indoors  
Geeignet für Innenanwendung  
**Pour un usage interne**  
Adecuada para uso en interiores  
Geschikt voor gebruik binnen  
Lämplig för inomhusbruk



Installation Instructions  
IS725 for Ovation 65  
Installation Instructions  
IS1235 for Quadrille 65  
Installation Instructions  
IS1236 for Quadrille Academy

< Millimetres >



This Electrical Product  
MUST be recycled.



09.09

**Concord**

Avis Way Newhaven East Sussex BN9 0ED  
T 0870 606 2030 F 01273 512 688 email: information@concordmarlin.com

