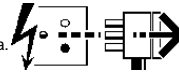
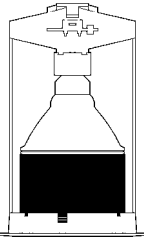




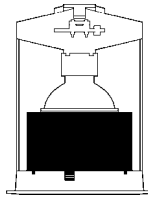
Disconnect from mains supply before replacing the fuse or the lamp.
 Vor dem Einsetzen der Sicherung oder der Lampe Spannungsfreiheit herstellen.
Débrancher le secteur avant de remplacer le fusible ou l'ampoule.
 Desconectar del suministro de la red, antes de realizar la sustitución del fusible o de la lámpara.
Voor het vervangen van lamp of zekering, eerst netspanning uitschakelen.
 Koppla bort spänningen före byte av en säkring eller en lampå.



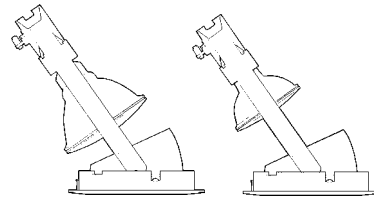
Switch Off
 Abschalten
Débrancher
 Desconectar
Uitschakelen
 Stång av



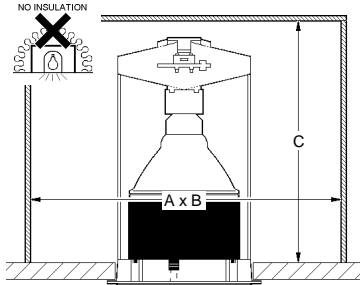
Deep Multigroove
2035357 2035358



Deep Multigroove
2035356 2035360

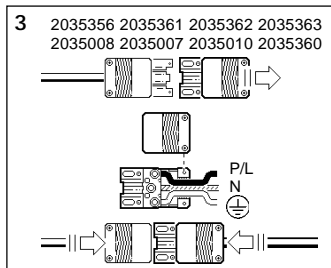
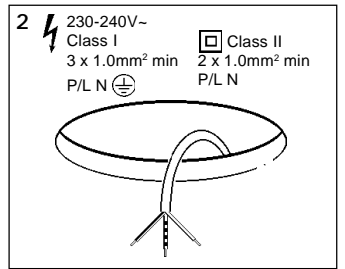
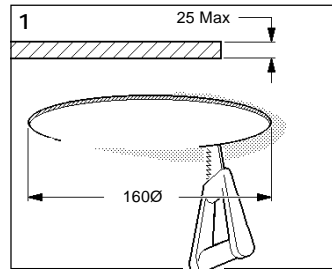


Directional
Darklight
2035006 2035007
2035008 2035010
2035361 2035362
2035363 2035364
2035365 2035366
2035367 2035368

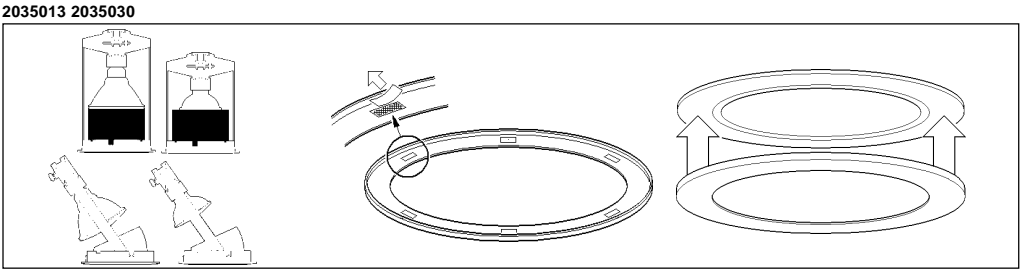
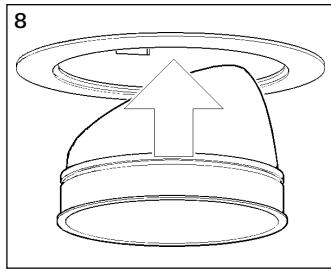
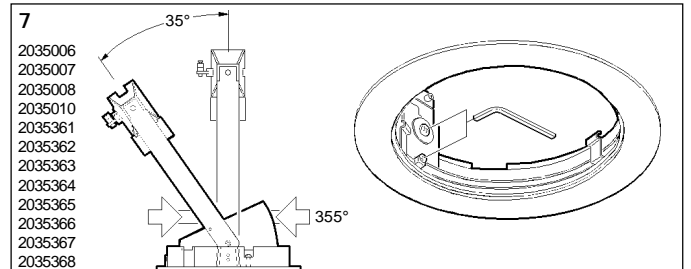
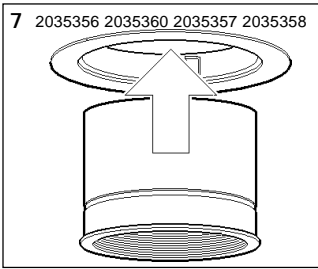
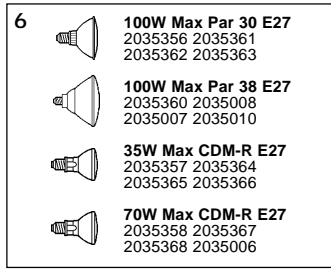
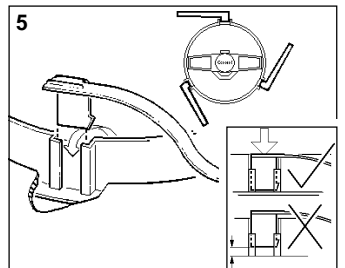
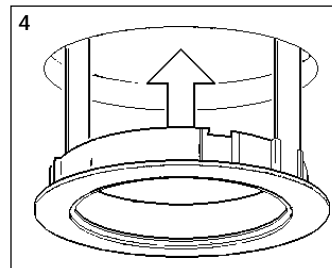
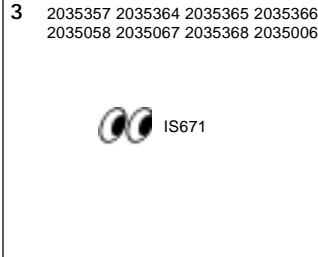


2035356 2035360
 A = 260
 B = 260
 C = 285

2035357 2035358
2035006 2035007 2035008 2035010
2035361 2035362 2035363 2035364
2035365 2035366 2035367 2035368
 A = 500
 B = 350
 C = 285



3 2035356 2035361 2035362 2035363
2035008 2035007 2035010 2035360



Suitable for use indoors
 Geeignet für Innenanwendung
Pour un usage interne
 Adecuada para uso en interiores
Geschikt voor gebruik binnen
 Lämplig för inomhusbruk



Replace any cracked protective shield.
 Dieses symbol bedeutet, dass defekte Schutzgläser sofort ersetzt werden müssen.
Ce symbol indique que vous devez remplacer tout verre de protection fêlé.
 Este simbolo indica que hay que reemplazar filtros en caso de rotura o desperfectos.
Dette symbolet indikerer at alle ødelagte (sprukne) sikkerhetsglass må skiftes.
 Valaisinta ei saa käyttää ilman suojalasiasa vioittunutta suojalasia on vaihdettava uuteen ennen valaisimen käyttöön ottoa.

< Millimetres >



This Electrical Product
MUST be recycled.



07.08