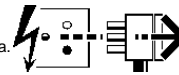
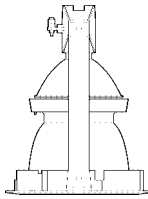




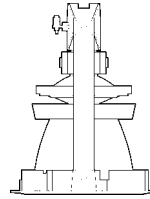
**Disconnect from mains supply before replacing the fuse or the lamp.**  
 Vor dem Einsetzen der Sicherung oder der Lampe Spannungsfreiheit herstellen.  
**Débrancher le secteur avant de remplacer le fusible ou l'ampoule.**  
 Desconectar del suministro de la red, antes de realizar la sustitución del fusible o de la lámpara.  
**Voor het vervangen van lamp of zekering, eerst netspanning uitschakelen.**  
 Koppla bort spänningen före byte av en säkring eller en lampa.



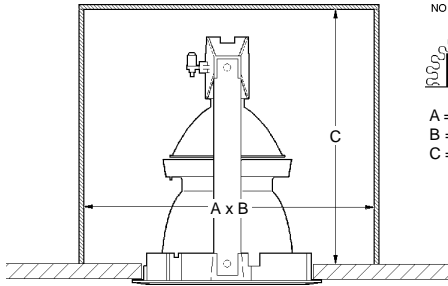
**Switch Off**  
 Abschalten  
**Débrancher**  
 Desconectar  
**Uitschakelen**  
 Stäng av



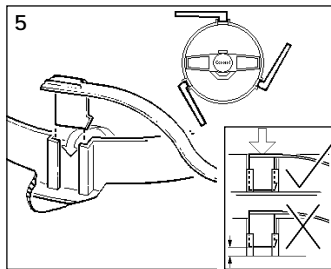
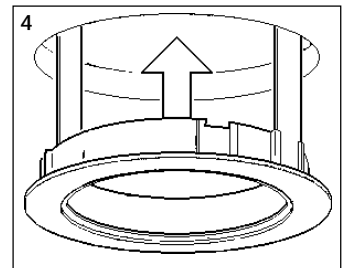
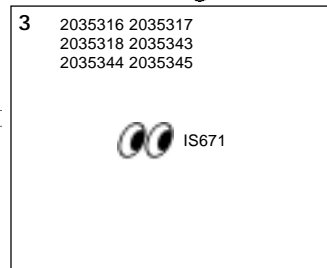
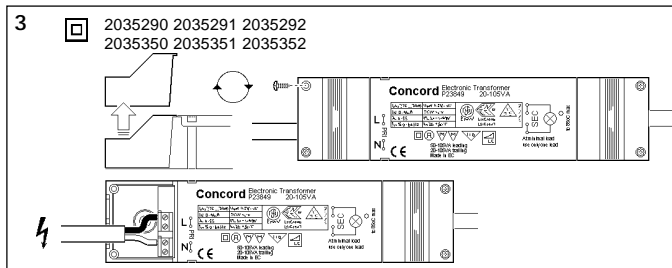
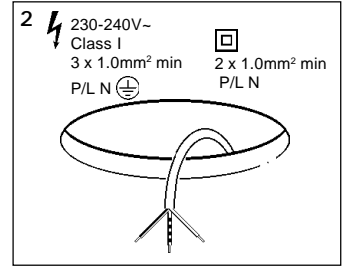
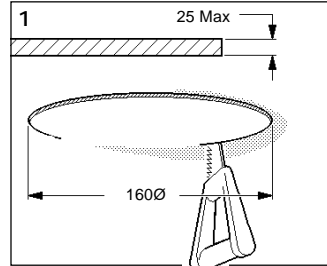
Accessory Downlight  
 2035290 2035291  
 2035292 2035316  
 2035317 2035318  
 2035343 2035344  
 2035345



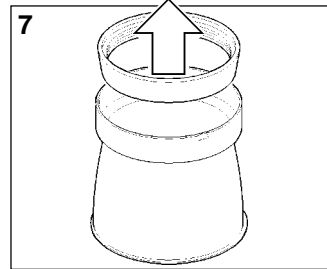
Accessory Downlight  
 2035350 2035351  
 2035352



NO INSULATION  
  
 A = 500  
 B = 350  
 C = 245



**6**  
 12V 100W Max QT-ax GY6.35  
 2035290 2035291 2035292  
 35W Max CDM-T G12  
 2035316 2035317 2035318  
 70W Max CDM-T G12  
 2035343 2035344 2035345  
 100W Max AR111  
 2035350 2035351 2035352

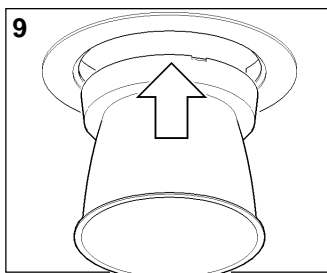
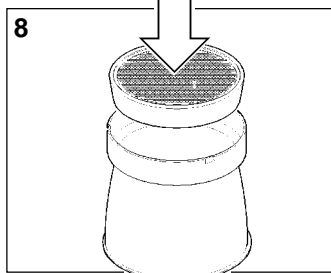


**\*\***

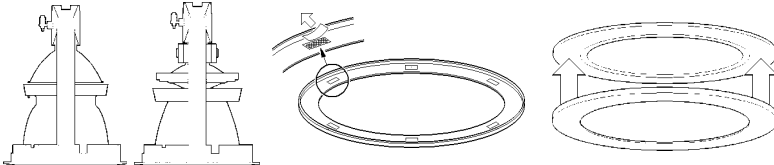
	Honeycomb	UV Filter	Daylight	Dydiumium Pink	Red	Amber
2027240 Honeycomb	+					
2027241 UV Filter		+				
2027246 Daylight			+			
2032127 Dyidiumium Pink				+		
2027244 Red					+	
2027245 Amber						+

**!？\*\***

2027241 2027246 2032127  
 2027240 2027241 2027246  
 2027244 2027245 2032128  
 2027238 or 2027234 or 2027239  
 2035350  
 2027238 or 2027234 + 2035351  
 2035352



2035013  
 2035030



**Suitable for use indoors**  
 Geeignet für Innenanwendung  
**Pour un usage interne**  
 Adecuada para uso en interiores  
**Geschild voor gebruik binnen**  
 Lämplig för inomhusbruk



**Replace any cracked protective shield.**  
 Dieses symbol bedeutet, dass defekte schutzgläser sofort ersetzt werden müssen.  
**Ce symbol indique que vous devez remplacer tout verre de protection fêlé.**  
 Este simbolo indica que hay que 'reemplazar filtros en caso de rotura o desperfectos'.  
**Dette symbolet indikerer at alle ødelagte (sprukne) sikkerhetglass må skiftes.**  
 Valaisinta ei saa käyttää ilman suojalasiasa vioitunut suojalasi on vaihdettava uuteen ennen valaisimen käyttöön ottoa.

< Millimetres >



This Electrical Product  
 MUST be recycled.



07.08

**Concord**

Avis Way Newhaven East Sussex BN9 0ED  
 T 0870 606 2030 F 01273 512 688 email: information@concordmarlin.com

