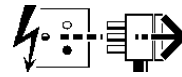




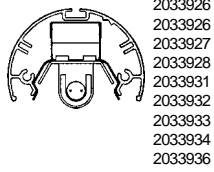
STAGE 3

Disconnect from mains supply before replacing the fuse or the lamp.
Vor dem Einsetzen der Sicherung oder der Lampe Spannungsfreiheit herstellen.
Débrancher le secteur avant de remplacer le fusible ou l'ampoule.
Desconectar del suministro de la red, antes de realizar la sustitución del fusible o de la lámpara.
Voor het vervangen van lamp of zekering, eerst netspanning uitschakelen.
Koppla bort spänningen före byte av en säkring eller en lampa.



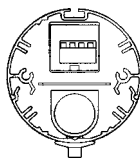
Switch Off
Abschalten
Débrancher
Desconectar
Uitschakelen
Stäng av

A Direct Module



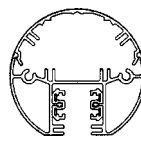
- 2033926
- 2033926
- 2033927
- 2033928
- 2033931
- 2033932
- 2033933
- 2033934
- 2033936

B Emergency Module



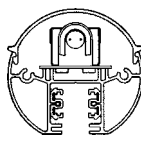
- 2033937
- 2033938
- 2033988
- 2033990

C 3 Circuit Track Module



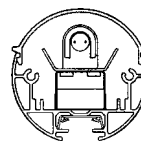
- 2033948
- 2033950
- 2033951
- 2033953
- 2033954
- 2033955

D Indirect 3 Circuit Track Module



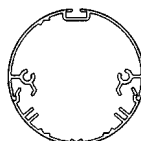
- 2033962
- 2033963
- 2033964
- 2033965

E Indirect 1 Circuit Track Module

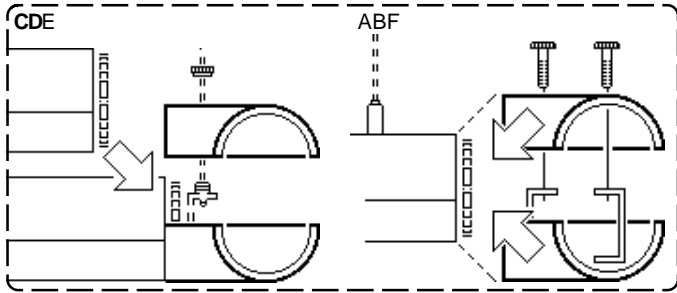


- 2033944
- 2033945
- 2033957
- 2033958
- 2033960
- 2033961

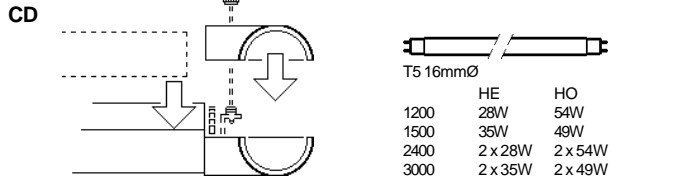
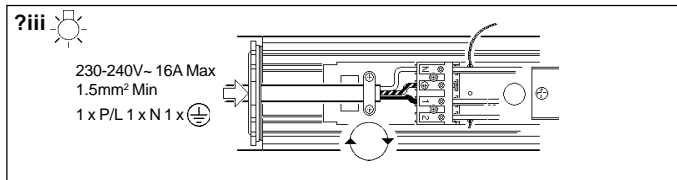
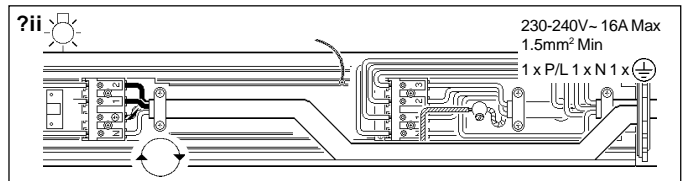
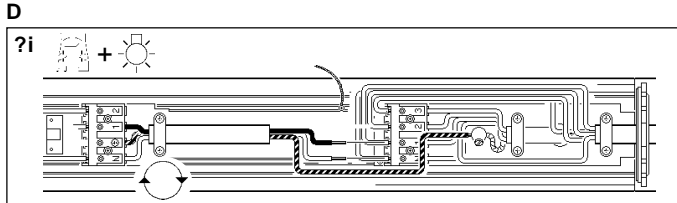
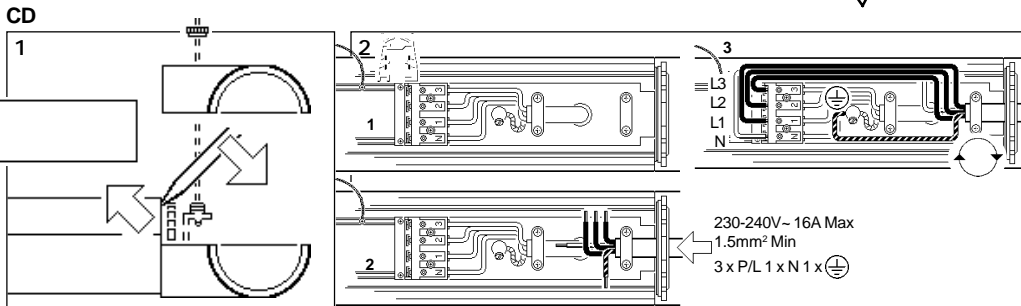
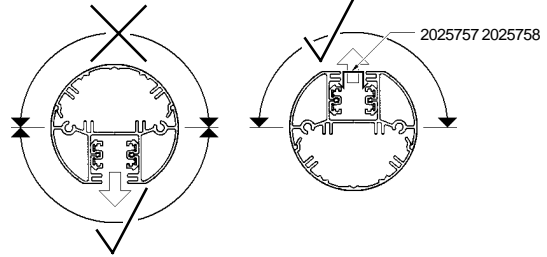
F Dummy Module



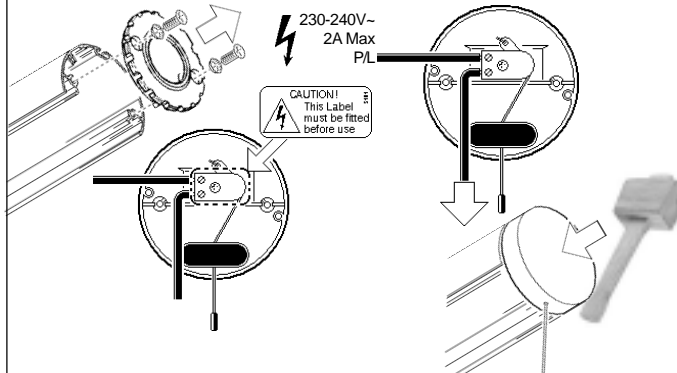
- 2033968
- 2033970
- 2033971
- 2033972
- 2033973
- 2033974



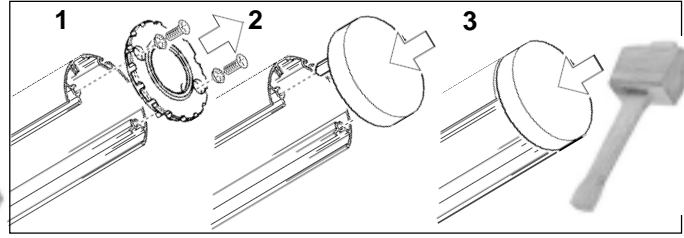
C - 2033948 2033950 2033951 2033953 2033954 2033955
D - 2033962 2033963 2033964 2033965



2034000 2034001 (AF)



2033997 2033998 (ABCDEF)



Suitable for use indoors
Geeignet für Innenanwendung
Pour un usage interne
Adecuada para uso en interiores
Geschikt voor gebruik binnen
Lämping för inomhusbruk

Replace any cracked protective shield.
 Dieses symbol bedeutet, dass defekte Schutzgläser sofort ersetzt werden müssen.
Ce symbole indique que vous devez remplacer tout verre de protection fêlé.
 Este simbolo indica que hay que reemplazar filtros en caso de rotura o desperfectos.
Dette symbolet indikerer at alle ødelagte (sprukne) sikkerhetglass må skiftes.
 Valaisinta ei saa käyttää ilman suojalasiasa vioitunut suojalasi on vaihdettava uuteen ennen valaisimen käyttöön ottoa.

< Millimetres > This Electrical Product **MUST** be recycled.