

Starter
2030732 2030733 2030734 2030735
Joiner
2030736

DO NOT INSULATION TEST WITH SPOTLIGHTS INSTALLED ON THESE TRACKS!

Isolate from the mains supply before any maintenance.

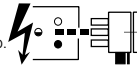
Vor Wartungsarbeiten von der Netzspannung trennen.

Veuillez isoler le luminaire du courant avant toute maintenance.

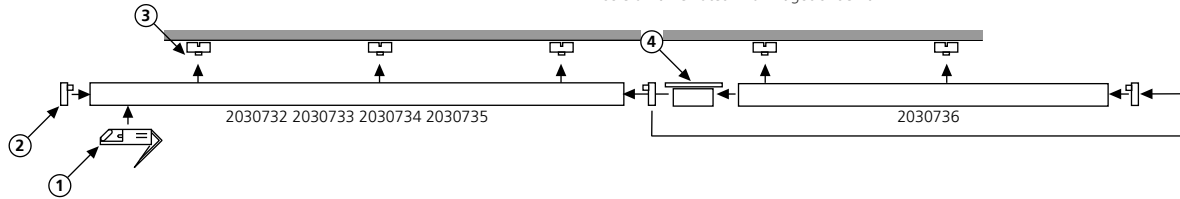
Aislar de la red eléctrica antes de cualquier operación de mantenimiento.

Koppel het toestel af van de netspanning voor elk onderhoud.

Isolera från elnätet innan något underhåll.

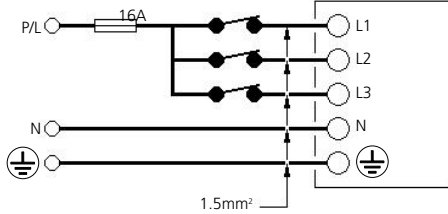
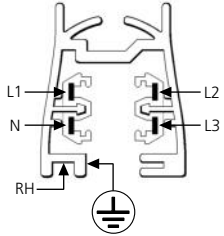


Switch Off
Abschalten
Débrancher
Desconectar
Uitschakelen
Stäng av



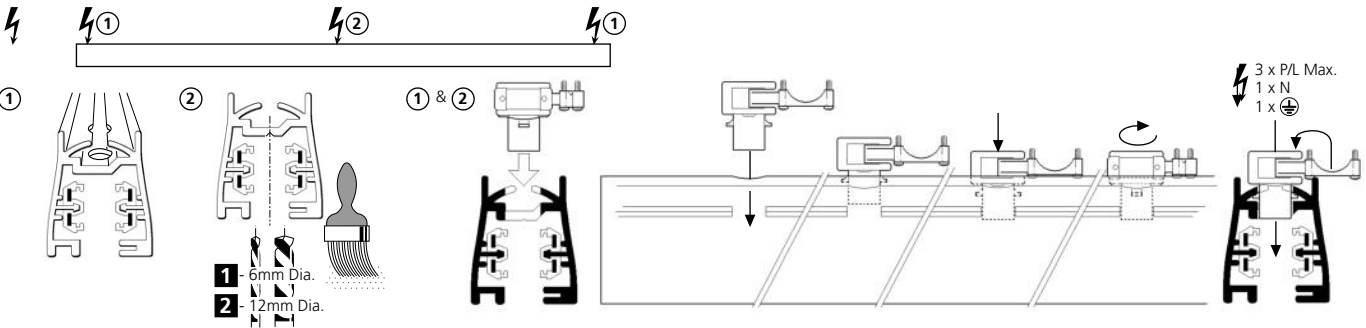
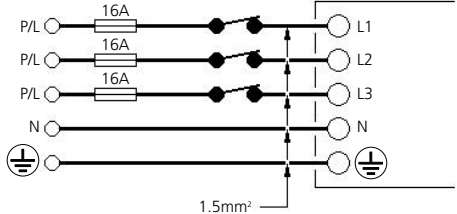
6 Push-Up Live Feed

⚡ 230V = 3680W Max.
240V = 3840W Max.

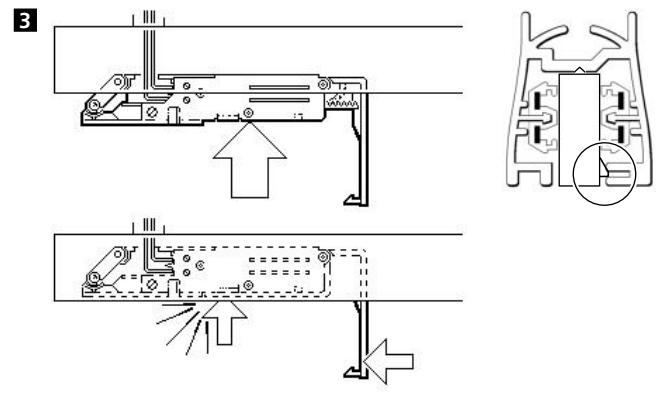
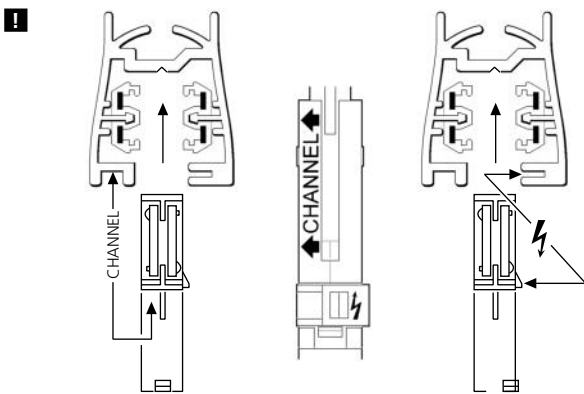
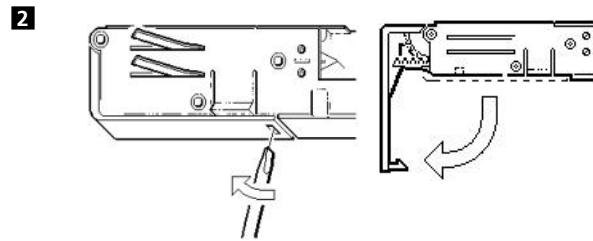
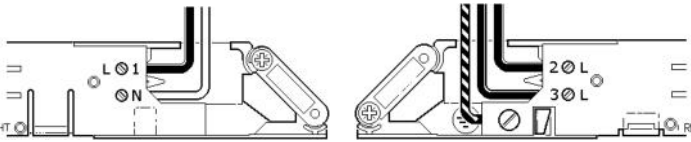


⚡ 400V - 3 x 3680W = 11040W Max.
415V = 3 x 3840W = 11520W Max.

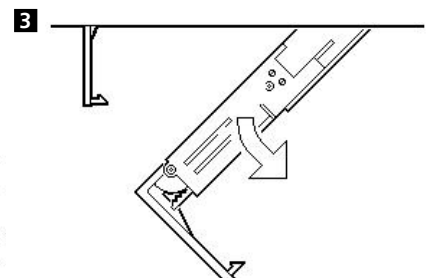
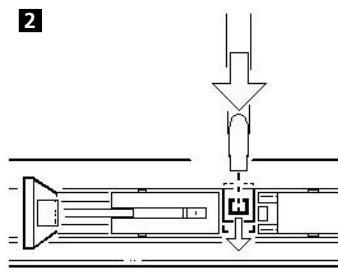
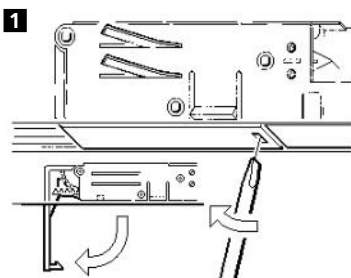
Where national wiring regulations allow.

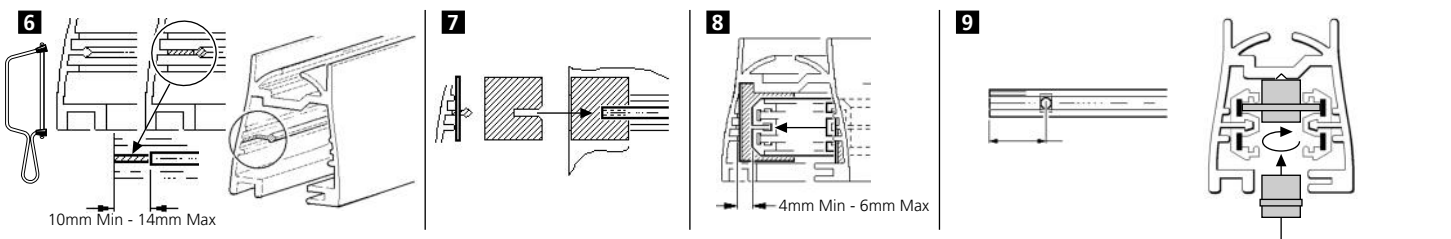
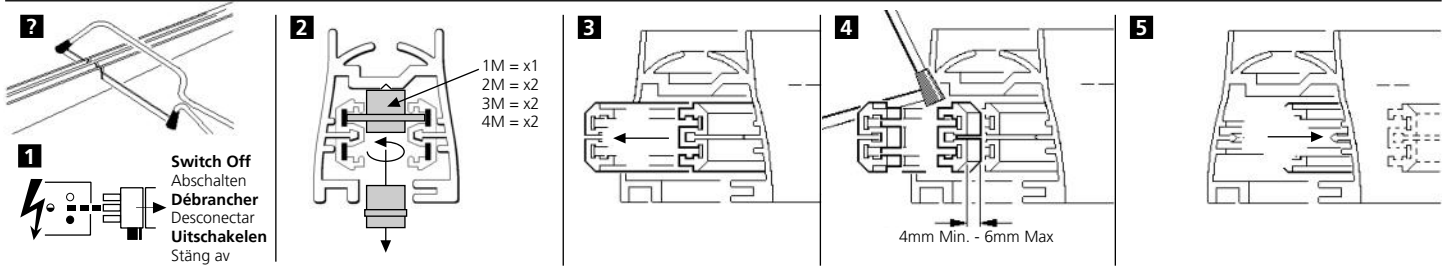
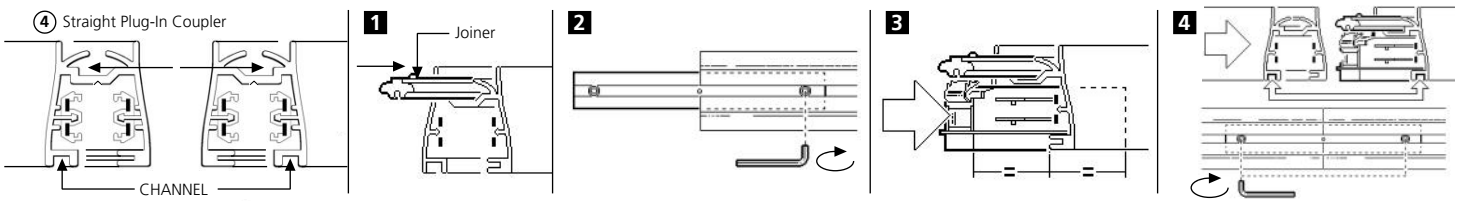
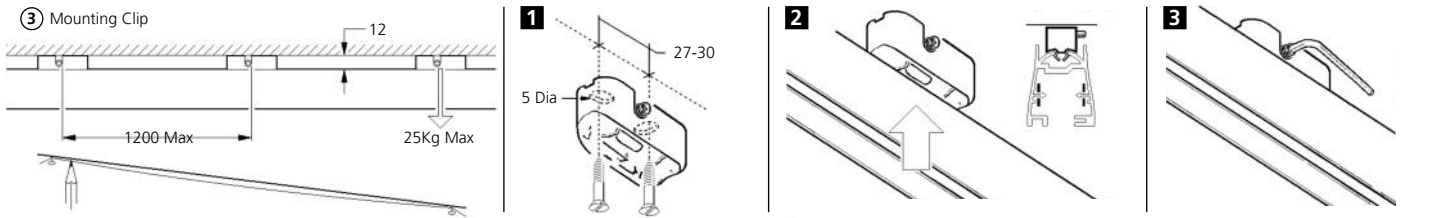
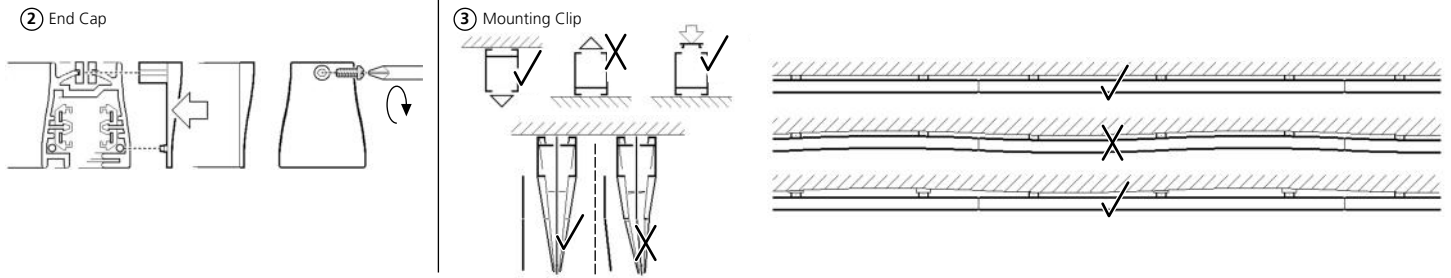


1 RH - 2027549 2027550 2027551



! Switch Off
Abschalten
Débrancher
Desconectar
Uitschakelen
Stäng av





Suitable for use indoors

Geeignet für Innenanwendung

Pour un usage interne

Adecuada para uso en interiores

Geschikt voor gebruik binnen

Lämplig för inomhusbruk

Replace any cracked protective shield.

Dieses symbol bedeutet, dass defekte Schutzgläser sofort ersetzt werden müssen.

Ce symbole indique que vous devez remplacer tout verre de protection fêlé.

Este símbolo indica que hay que 'reemplazar filtros en caso de rotura o desperfectos'.

Detta symbolet indikerer at alle delagte (sprukne) sikkerhetsglass må skiftes.

Valaisinta el saa käyttää ilman suojalasia vioitunut suojalasi on vaihdettava uuteen ennen valaisimen käyttöön ottoa.

This Electrical Product
MUST be recycled.

Concord

Avis Way Newhaven East Sussex BN9 0ED
T 0870 606 2030 F 01273 512 688 email: information@concordmarlin.com
www.havells-sylvania.com

© Concord Lighting Limited
02.12