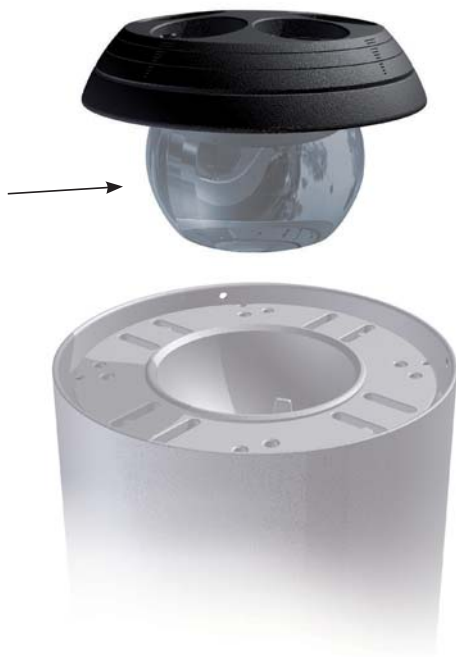




PATENTED ORBITAL AIMING SYSTEM

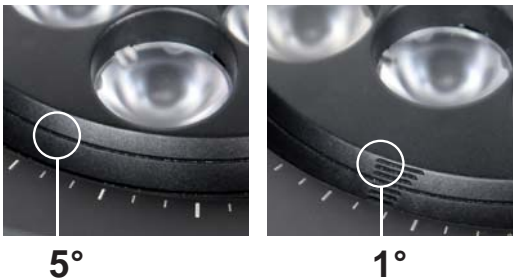
For further information refer to product instruction booklet.

For the unit to operate properly, there must be good contact between the spherical surfaces; this is assured by the presence of a thermo-conductive compound which must not be removed.



PRECISION

Inclination



Rotation

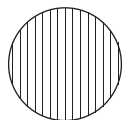


WALL WASHING - EB

The orbital aiming allows the use of the elliptical (EB) optics for wall washing effect when the fixture is installed near the wall.



lens knurling right to the wall



WALL

ADJUSTING

- Open the fixture
- Unblock Orbital Aiming System loosening the screws



Adjust the beam



fix Orbital Aiming System tightening the screws



Close the fixture

LED RISK GROUP 2 - CAUTION: POSSIBLY HAZARDOUS OPTICAL RADIATION EMITTED FROM THIS PRODUCT. DO NOT STARE AT OPERATING LAMP. MAY BE HARMFUL TO THE EYE. LED CIRCUIT CAN'T BE REPLACED BY THE USER. GET IN TOUCH WITH OUR COMPANY OR ITS SALES ORGANIZATION.

MI/1888 - 2^e ed