

Quadrille Couplers



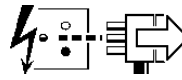
This Product
MUST be EARTHED

IS1327A

Installation Instructions

- IS689 - Suspensions
- IS1240 - Dimming
- IS1235 - Modules
- IS1238 - Splines

Disconnect from mains supply before replacing the fuse or the lamp.
 Vor dem Einsetzen der Sicherung oder der Lampe Spannungsfreiheit herstellen.
Débrancher le secteur avant de remplacer le fusible ou l'ampoule.
 Desconectar del suministro de la red, antes de realizar la sustitución del fusible o de la lámpara.
Voor het vervangen van lamp of zekering, eerst netspanning uitschakelen.
 Koppla bort spänningen före byte av en säkring eller en lampa.



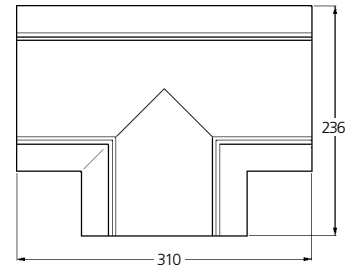
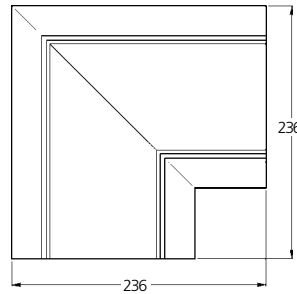
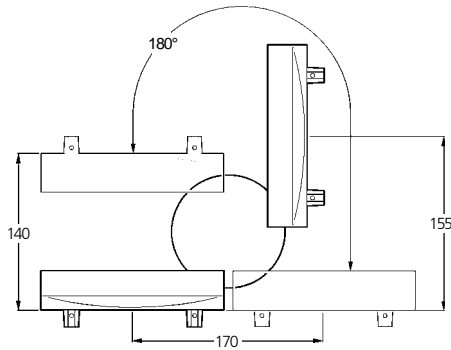
Switch Off
 Abschalten
Débrancher
 Desconectar
Uitschakelen
 Stång av

2047900
 2047901
 2047902
 2047903
 2047904
 2047905

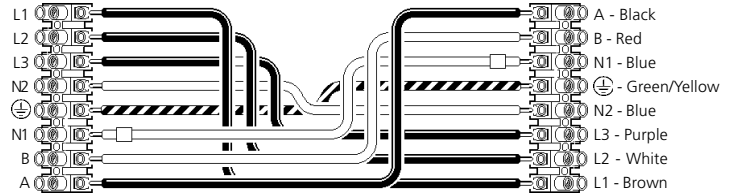
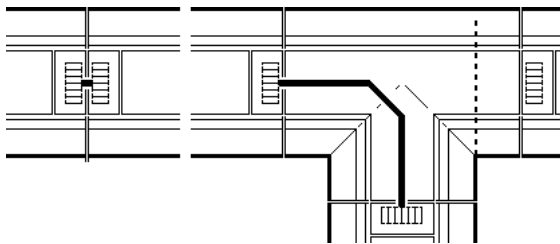
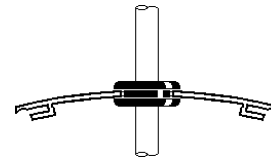
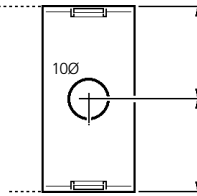
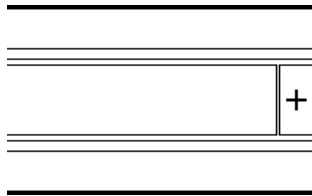
2047904
 2047905

2047902
 2047903

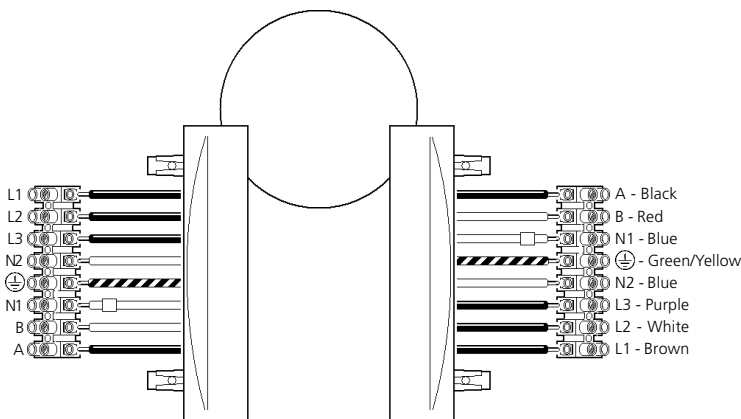
2047900
 2047901



230/240V 1.0mm² Min (LS1 Track - 2047848 2047849 2047850 2047851 2047852 2047853 2047854 2047855 2047856 2047857 2047858 2047859 2047860 2047861 2047862 2047863 = 10 Amps Max.)



2047904 2047905



Suitable for use indoors
 Geeignet für Innenanwendung
Pour un usage interne
 Adecuada para uso en interiores
Geschikt voor gebruik binnen
 Lämpelig för inomhusbruk



< Millimetres >



This Electrical Product
MUST be recycled.



02.10

Concord

Avis Way Newhaven East Sussex BN9 0ED
 T 0870 606 2030 F 01273 512 688 email: information@concordmarlin.com
 www.havells-sylvania.com

