

# Regressed Round

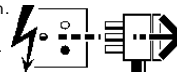
9023 P48



This Product **MUST** be EARTHED

**IS2791**

**Disconnect from mains supply before replacing the fuse or the lamp.**  
**Vor dem Einsetzen der Sicherung oder der Lampe Spannungsfreiheit herstellen.**  
**Débrancher le secteur avant de remplacer le fusible ou l'ampoule.**  
**Desconectar del suministro de la red, antes de realizar la sustitución del fusible o de la lámpara.**  
**Voor het vervangen van lamp of zekering, eerst netspanning uitschakelen.**  
**Koppla bort spänningen före byte av en säkring eller en lampa.**



**Switch Off**  
**Abschalten**  
**Débrancher**  
**Desconectar**  
**Uitschakelen**  
**Stäng av**

This luminaire which is suitable for interior recessed ceiling mounting requires a 460mm diameter aperture, a recess depth of 125mm and 75mm clearance between outside of housing and recessed enclosure.

Installation should be carried out by a suitably qualified person in accordance with good electrical practice and the appropriate national wiring regulations.

Switch off the mains electrical supply before commencing installation.

### Installation Procedure

Check rating marked on label (C) conforms with mains electrical supply.

Remove bezel (J) from gallery (G). Extract mounting clips (H) from gallery (G) as shown in Fig. 1.

Connect flexible cable (B) to mains electrical supply using a suitable junction box (A) or plug.

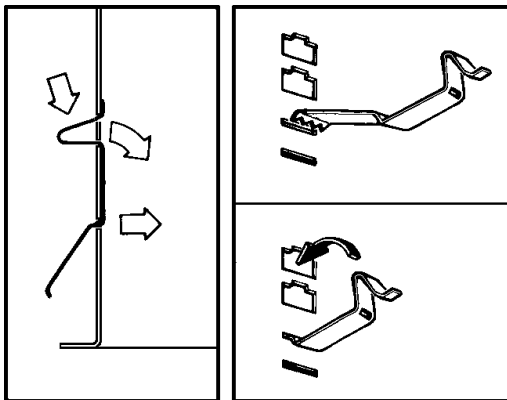
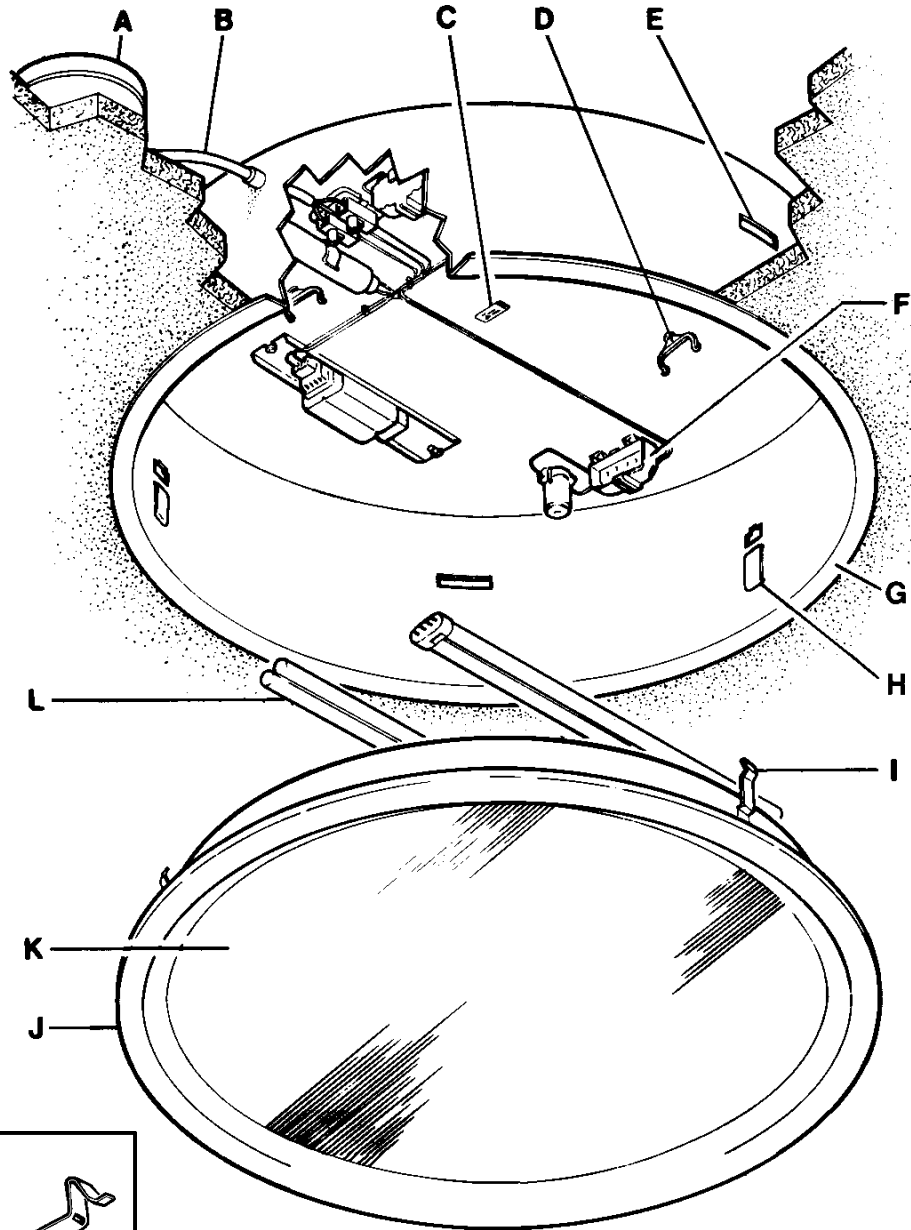
Insert gallery (G) in ceiling aperture and secure with the three mounting clips (H) as shown in Fig. 2.

NOTE: Use bottom slots for 5-15mm ceilings or top slots for 15-25mm ceilings.

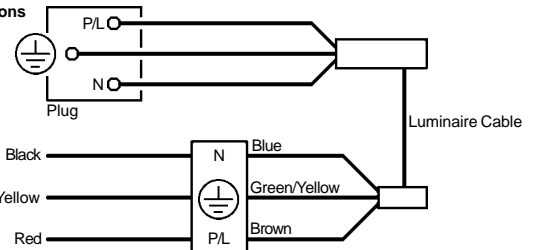
Fit appropriate lamps (L) as shown on label (C) by pushing them firmly into lampholders (F) and support clips (D).

Place diffuser (K) in bezel (J) and fit assembly in gallery (G) ensuring that the bezel retaining clips (I) are engaged in retaining slots (E).

**WARNING: THIS LUMINAIRE MUST BE EARTHED!**



### Electrical Connections



**Suitable for use indoors**  
**Geeignet für Innenanwendung**  
**Pour un usage interne**  
**Adecuada para uso en interiores**  
**Geschikt voor gebruik binnen**  
**Lämplig för inomhusbruk**



**Replace any cracked protective shield.**

Dieses symbol bedeutet, dass defekte Schutzgläser sofort ersetzt werden müssen.

**Ce symbole indique que vous devez remplacer tout verre de protection fêlé.**

Este símbolo indica que hay que reemplazar filtros en caso de rotura o desperfectos.



**Dette symbolet indikerer at alle ødelagte (sprukne) sikkerhetsglass må skiftes.**

Valaisinta ei saa käyttää ilman suojalasia vioitunut suojalasi on vaihdettava uuteen ennen valaisimen käyttöön ottoa.

< Millimetres >



This Electrical Product **MUST** be recycled.



01.09

# Concord

Avis Way Newhaven East Sussex BN9 0ED  
 T 0870 606 2030 F 01273 512 688 email: information@concordmarlin.com

