





**INSTALLATION INSTRUCTIONS FOR:****Aquarius D Midi**


Follow these instructions carefully to ensure safe and reliable operation. Retain this leaflet for future reference, in case of queries contact your supplier.

The following symbols will be found on the product or labels:

-  — This fitting must be earthed, Class 1.
-  — Suitable for mounting on normally flammable surfaces.
-  — IP44, splash proof.
-  — Class II. Double insulated. This fitting must not be earthed.
- N** — Neutral.
- L** — Line.

**COLOUR CODING OF CABLES**

Throughout this leaflet the following coding is used:

- Line L — Brown or Red
- Neutral N — Blue or Black
- Earth  — Green/Yellow or bare conductor

**SAFETY**

Follow the appropriate national wiring regulations. If in doubt consult a qualified electrician. Disconnect mains supply before installation, maintenance, or replacing the lamp.

This product must not be modified. Any modification will negate any Safety Mark approvals and may render the product unsafe. The Company accepts no responsibility for modified products. The products must be installed in accordance with these instructions.

Suitable for use in ambient temperatures of up to 25°C.

This fitting should not be covered with any heat insulating material, air flow around the fitting should not be restricted.

This unit should be connected into the lighting supply circuit, to be fused at 5A.

To ensure good electrical contact, terminals must be screwed firmly and wire strands should not be tinned.

**INSTALLATION INSTRUCTIONS**

1. Remove the small plastic moulding from the side of the luminaire using hexagonal key provided.
2. Remove the diffuser using the previously removed plastic part (or a coin or a screwdriver).
- 2a. 16W and 2 x 7 W versions — loosen the screws and disengage the hinge mechanism to remove the gear tray.
- 2b. 60W GLS version — loosen the two screws and remove the reflector.
3. Choose which method of wiring entry is to be used:
  - (a) Sub-surface wiring (Fig. 1)
  - (b) Surface wiring (Fig. 2)
  - (c) Wall box (Fig. 3)
  - (d) Conduit (Fig. 4) (not Norway)
4. Drill fixing holes in the base moulding at the positions indicated according to the chosen method of wiring (See appropriate fig.)
5. Mark fixing positions on mounting surface using the base moulding as a template (Not required for 3c.)
6. Drill holes into the mounting surface (ensuring that the fixing holes are clear of any sub-surface wiring or obstructions) and fit Rawlplugs supplied.
7. Pierce hole in grommet, feed mains cable through grommet allowing adequate cable for termination (side conduit entry used for 3d.)
8. Secure fittings to the mounting surface with the woodscrews provided, ensuring that the steel washers and the rubber washers are correctly fitted. (See appropriate fig. for details).
- 8a. With method 3c use screws provided with wall box.
9. Connect the mains cable to terminal block taking note of the terminal block marking (see note on cable colour coding). Check that there is no trapped insulation or exposed conductors).

10. Replace gear tray or reflector if applicable and fit lamp(s) — refer to the rating label for lamp(s) details.
11. Replace the diffuser.
12. Replace the small plastic moulding using the hexagonal key.
13. Connect the mains supply and check that the fitting is operating correctly.

On completion of this installation, hand this leaflet and hexagonal key to the person responsible for lighting maintenance. Make a note of the supplier and the date of purchase.

**LAMP CHANGING**

Defective lamps should be replaced as soon as possible, only lamps of correct type and rating should be used (see product rating label).

The fitting and lamp can quickly become hot, ensure that both have cooled adequately before replacing lamps.

Disconnect from mains supply before starting procedure, see installation instructions for lamp removal and replacement.

Dispose of old lamp in accordance with lamp manufacturers recommendations.

**CLEANING**

Ensure mains supply is disconnected and that fitting and lamp are cool. Use only a soft dry cloth, do not use abrasives or solvents.

**NOTE**

Do not cover or place any item on the fitting.



FIG. 1

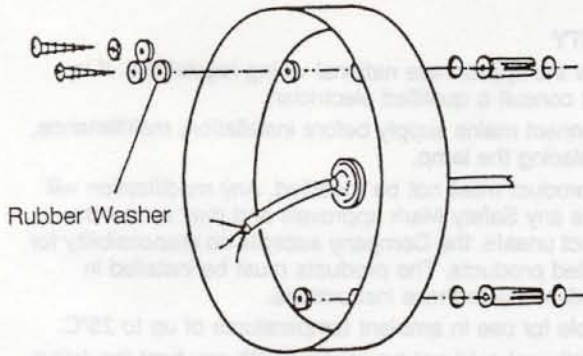
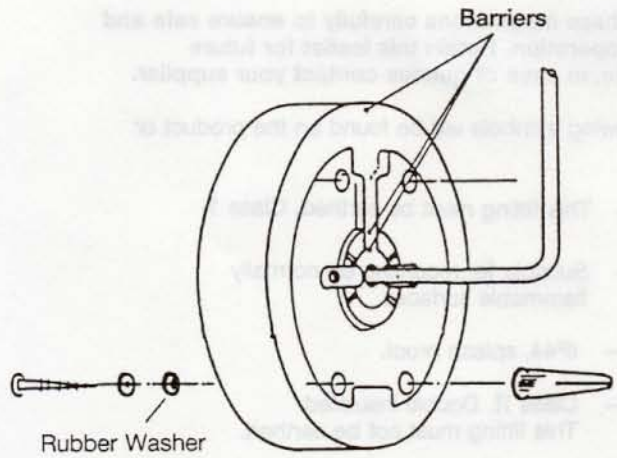


FIG. 2



**Note:** Carefully cut & remove barriers to accommodate mains cable ensuring there are no sharp edges and the cable is not trapped.

FIG. 3

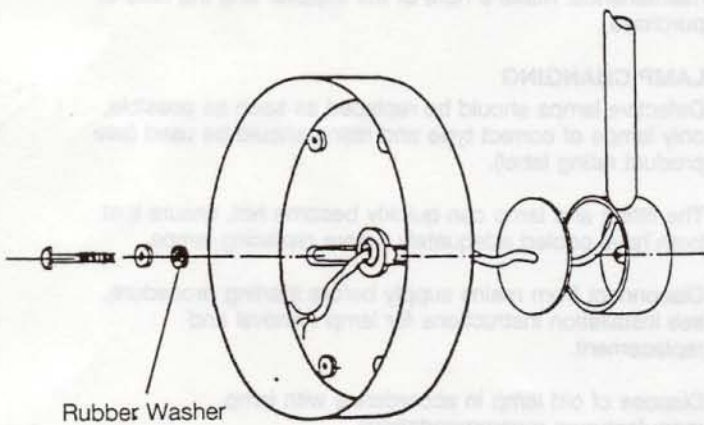
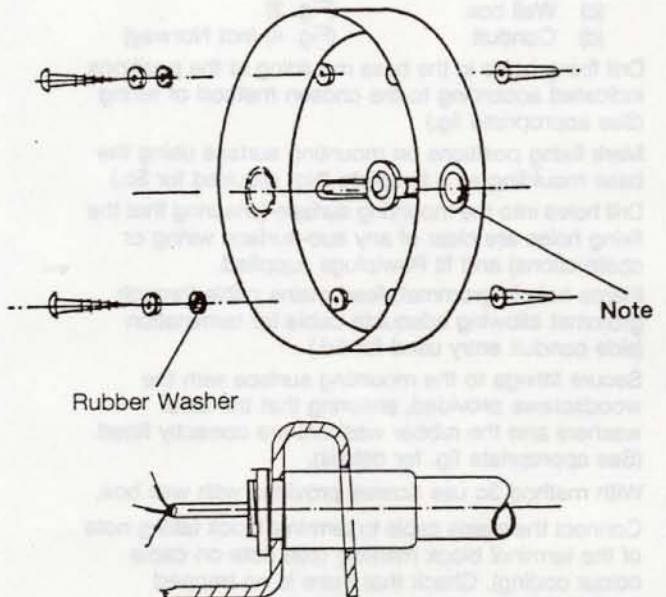


FIG. 4  
(not Norway)



**Note:** Drill appropriate size holes to accommodate system to be utilised. For through wiring repeat detail where indicated.