

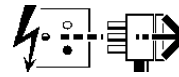
3F Recessed Fluorescent

Installation Instructions **IS500** **This Product MUST be EARTHED**

IS3161

FRD / FFD Types

Disconnect from mains supply before replacing the fuse or the lamp.
Vor dem Einsetzen der Sicherung oder der Lampe Spannungsfreiheit herstellen.
Débrancher le secteur avant de remplacer le fusible ou l'ampoule.
Desconectar del suministro de la red, antes de realizar la sustitución del fusible o de la lámpara.
Voor het vervangen van lamp of zekering, eerst netspanning uitschakelen.
Koppla bort spänningen före byte av en säkring eller en lampa.



Switch Off
Abschalten
Débrancher
Desconectar
Uitschakelen
Stäng av

This luminaire is suitable for interior ceiling mounting. They have been designed to be compatible with popular types of suspended ceiling including 15mm exposed 'tee' grids.

The luminaire should be installed by a suitably qualified person in accordance with good electrical practice and the appropriate national wiring regulations.

Switch off mains electrical supply before commencing installation.

Installation Procedure

Check that the rating marked on the label conforms with the mains electrical supply.

Partial screw the suspension arm securing screws into the suspension arms.

Offer the housing to the ceiling aperture (see Table A) and feed the mains supply cable through the grommet. Insert the housing in the ceiling aperture, place the suspension arms through the slots in the housing, locate them on the ceiling mounting surface or gridwork as applicable and tighten the screws. For suspended installation the use of 6mm diameter studding with locknuts and large washers is recommended (see Table A).

Connect the mains supply cable leads to their respective terminals in the terminal block.

Opal Diffuser, Prismatic Controller, Bi-Planar Reflector and Parabolic / Flat Blade Reflector versions.

Fit the appropriate lamps as indicated on the luminaire label.

Locate the pins on one end of the diffuser/reflector panel into the housing end flange cut-outs. Where applicable, connect the earth lead from the reflector to the housing earth terminal. Retract the pins in the other end of the panel with the pin levers, insert the panel in the housing and release the pin levers.

Asymmetric and Parabolic Reflector versions - Fig. 1.

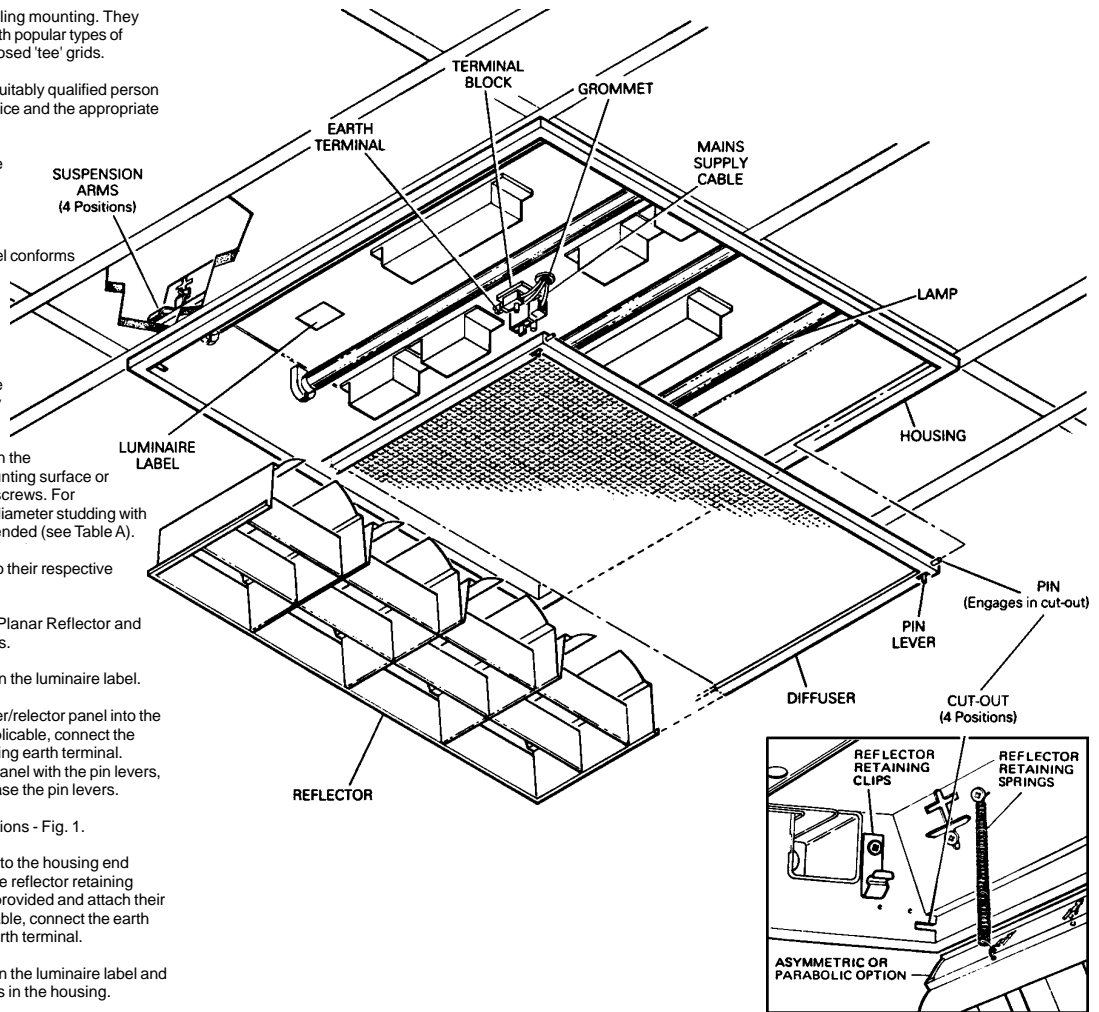
Secure the four reflector retaining clips to the housing end flanges with the screws provided. Fix the reflector retaining springs to the housing with the screws provided and attach their free ends to the reflector. Where applicable, connect the earth lead from the reflector to the housing earth terminal.

Fit the appropriate lamps as indicated on the luminaire label and push the reflector into the retaining clips in the housing.

WARNING: This luminaire must be earthed.

These luminaires should be cleaned using warm soapy water and a soft cloth. Ensure that the luminaire is switched off during cleaning.

Dispose of lamps in accordance with the manufacturer's instructions.



Fixing Centres for Direct Fixing from Soffit and Ceiling Aperture Sizes

Rating	Catalogue No.	A	B	C	D
4 x 18W	FRD 418/FFD 418	490	275	575	575
1 x 36W	FRD 136	1100	-	1175	150
2 x 36W	FRD 236/FFD 236	1100	-	1175	275
3 x 36W	FRD 336	1100	185	1175	575
4 x 36W	FRD 436/FFD 436	1100	275	1175	575
1 x 58W	FRD 158	1100	-	1475	150
2 x 58W	FRD 258/FFD 258	1100	-	1475	275

Dimensions in Millimeters

Suitable for use indoors

Geeignet für Innenanwendung

Pour un usage interne

Adecuada para uso en interiores

Geschild voor gebruik binnen

Lämplig för inomhusbruk



Replace any cracked protective shield.

Dieses symbol bedeutet, dass defekte Schutzgläser sofort ersetzt werden müssen.

Ce symbole indique que vous devez remplacer tout verre de protection fêlé.

Este símbolo indica que hay que reemplazar filtros en caso de rotura o desperfectos.

Dette symbolet indikerer at alle ødelagte (sprukne) sikkerhetglass må skiftes.

Valaisinta ei saa käyttää ilman suojalasiasa vioitunut suojalasi on vaihdettava uuteen ennen valaisimen käyttöön ottoa.



< Millimetres >



This Electrical Product MUST be recycled.



04.08

Concord

Avis Way Newhaven East Sussex BN9 0ED
 T 0870 606 2030 F 01273 512 688 email: information@concordmarlin.com

