

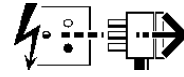
Single Circuit Corners



IS513C

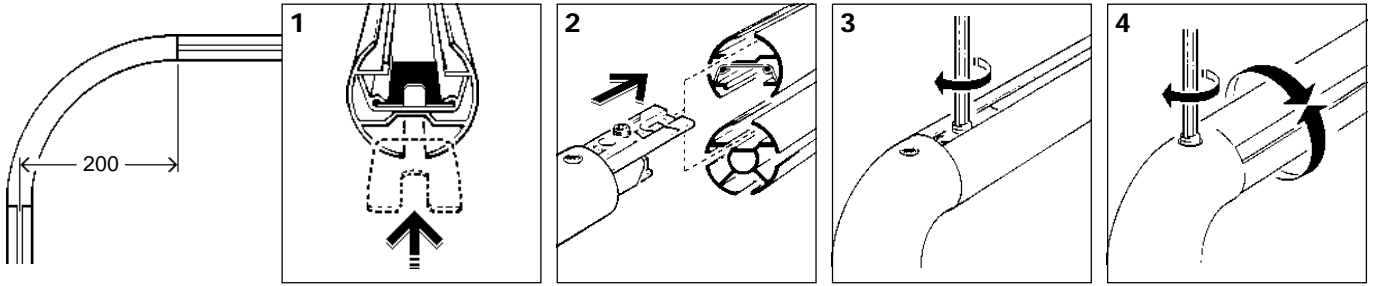
2011831 2011832 2011839
 2011840 2011843 2011844
 2011845 2011846 2011871
 2011873 2011961 2019802
 2019803 2019804

Disconnect from mains supply before replacing the fuse or the lamp.
 Vor dem Einsetzen der Sicherung oder der Lampe Spannungsfreiheit herstellen.
Débrancher le secteur avant de remplacer le fusible ou l'ampoule.
 Desconectar del suministro de la red, antes de realizar la sustitución del fusible o de la lámpara.
Voor het vervangen van lamp of zekering, eerst netspanning uitschakelen.
 Koppla bort spänningen före byte av en säkring eller en lampa.

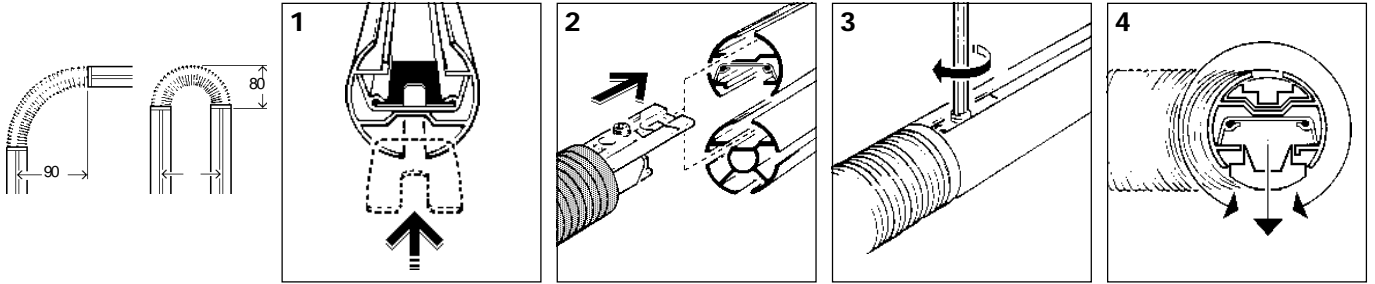


Switch Off
 Abschalten
Débrancher
 Desconectar
Uitschakelen
 Stäng av

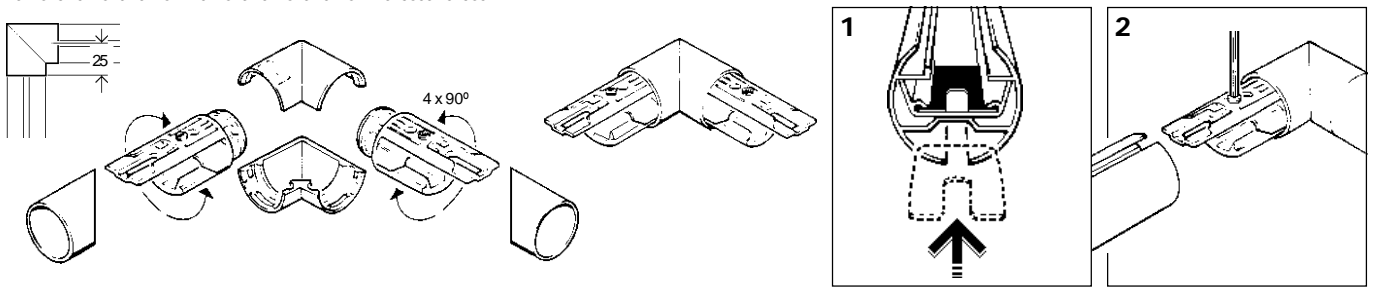
2011831 2011832 2019802



2011839 2011840 2011961

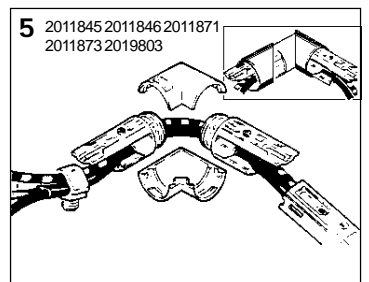
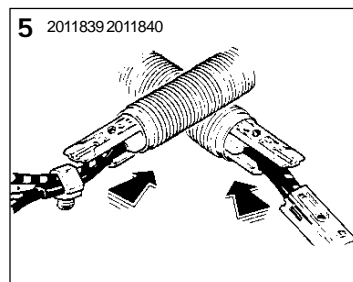
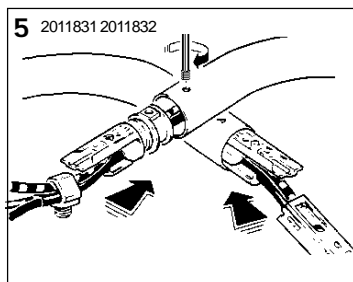
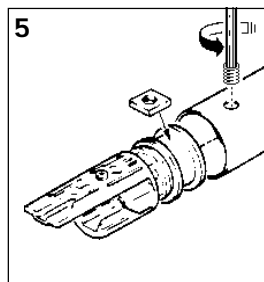
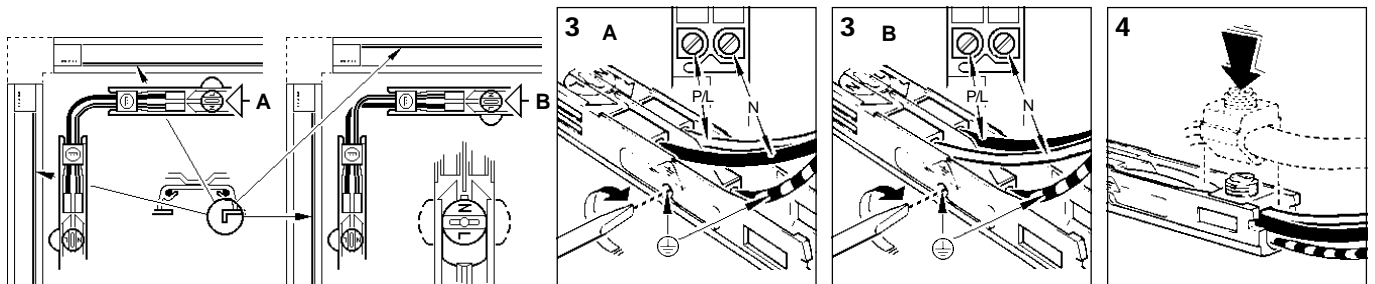
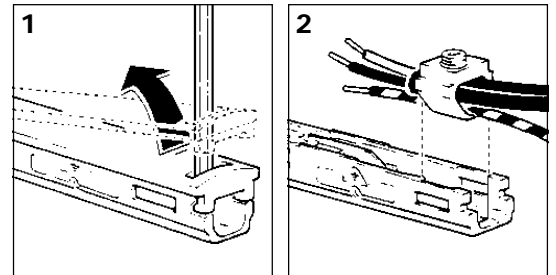
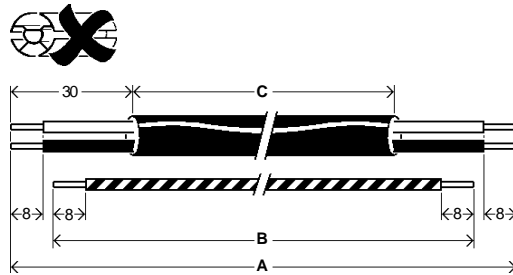


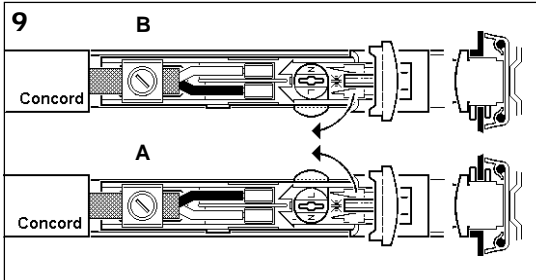
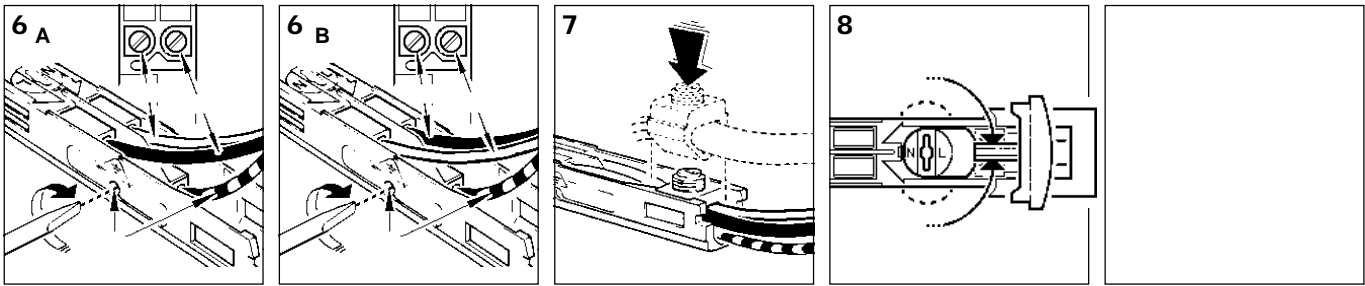
2011845 2011846 2011871 2011873 2011843 2011844 2019803 2019804



2011837 2011838

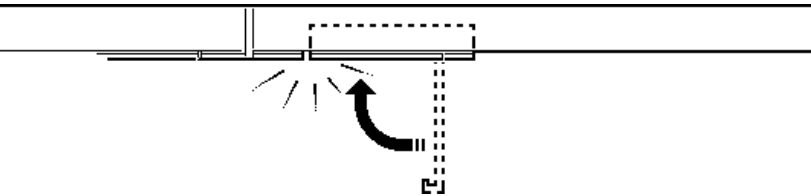
	'A' Min.	'B' Min.	'C' Min.
2011831	500	480	440
2011832	"	"	"
2011839	350	330	290
2011840	"	"	"
2011845	185	165	125
2011846	"	"	"
2011871	"	"	"
2011873	"	"	"
2019803	"	"	"



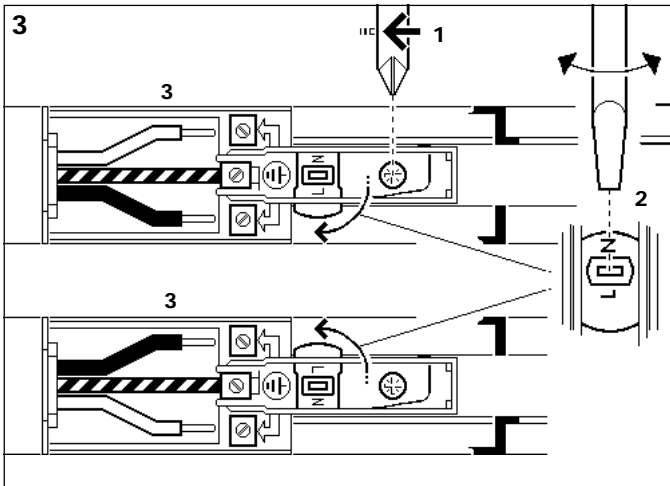
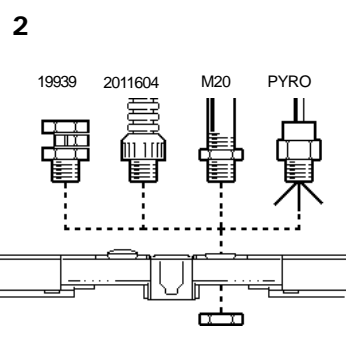
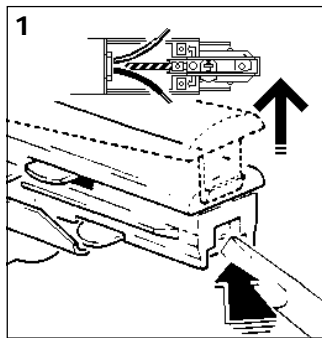
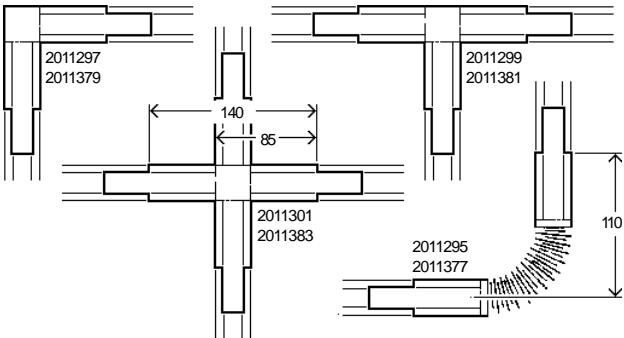


10 ! Following electrical installation, check to ensure that the correct polarity has been maintained throughout the system.

! Gedurende het installeren en koppelen van rails dient te worden gelet op het aanhouden van de juiste polariteit (een dóórlpende fase en nul).

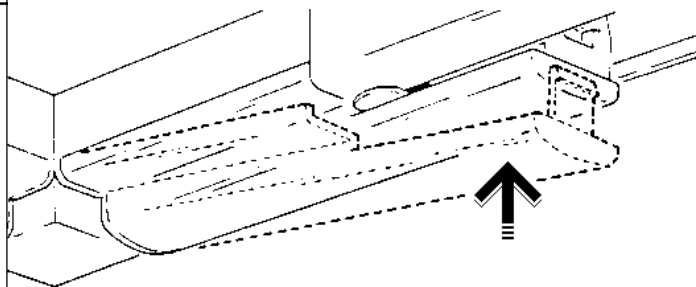


2627100 2629382 2631611



4 ! Following electrical installation, check to ensure that the correct polarity has been maintained throughout the system.

! Gedurende het installeren en koppelen van rails dient te worden gelet op het aanhouden van de juiste polariteit (een dóórlpende fase en nul).



Suitable for use indoors
 Geeignet für Innenanwendung
 Pour un usage interne
 Adecuada para uso en interiores
 Geschikt voor gebruik binnen
 Lämpelig för inomhusbruk



< Millimetres >

Concord:marlin

Avis Way Newhaven East Sussex BN9 0ED
 T 0870 606 2030 F 01273 512 688 email: information@concordmarlin.com

