

# Remote Ballast Box

Installation Instructions  
IS500

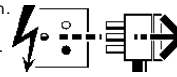


This Product  
MUST be EARTHED

## IS5218

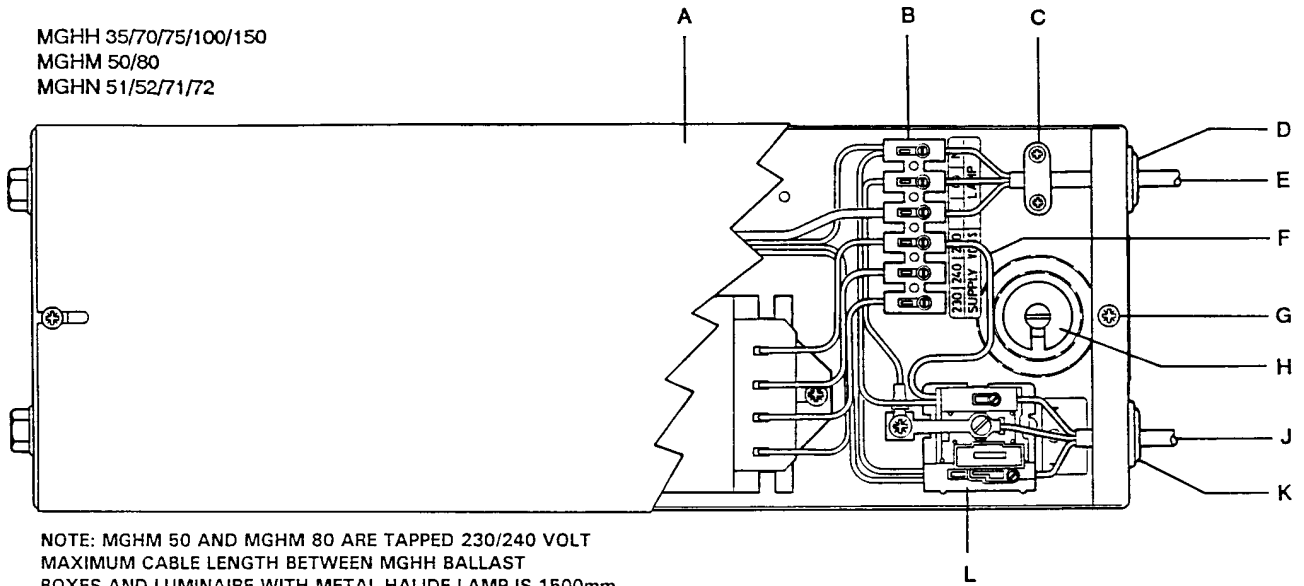
MGHH 35/70/75/100/150  
MGHM 50/80  
MGHN 51/52/71/72/50P/100P

**Disconnect from mains supply before replacing the fuse or the lamp.**  
Vor dem Einsetzen der Sicherung oder der Lampe Spannungsfreiheit herstellen.  
**Débrancher le secteur avant de remplacer le fusible ou l'ampoule.**  
Desconectar del suministro de la red, antes de realizar la sustitución del fusible o de la lámpara.  
**Voor het vervangen van lamp of zekering, eerst netspanning uitschakelen.**  
Koppla bort spänningen före byte av en säkring eller en lampa.



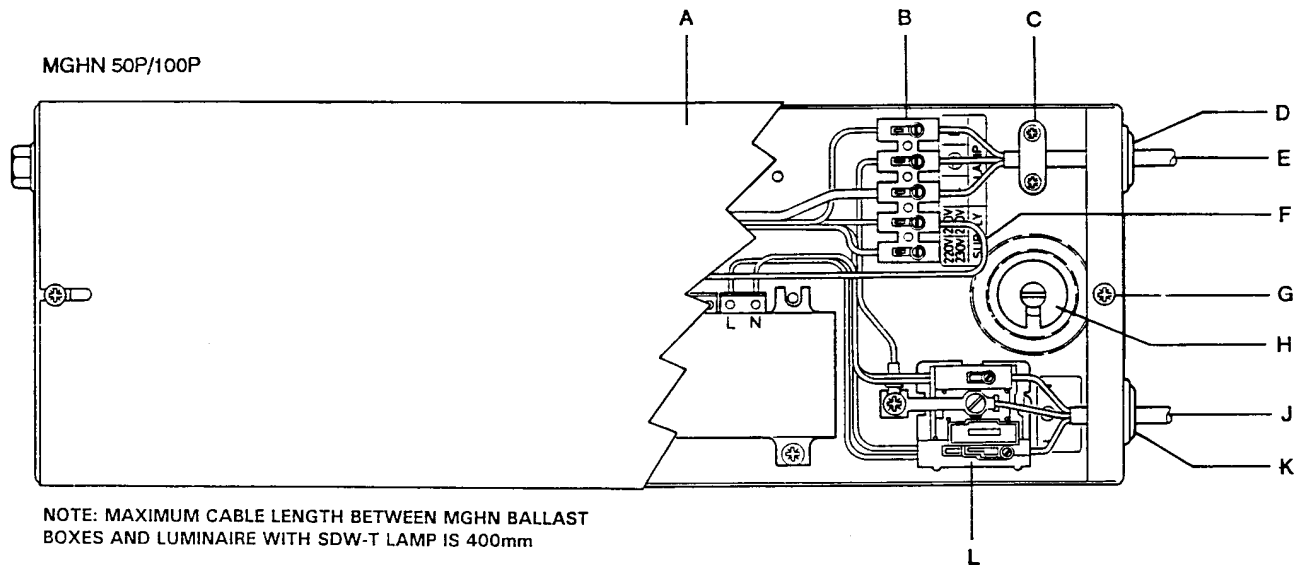
**Switch Off**  
Abschalten  
**Débrancher**  
Desconectar  
**Uitschakelen**  
Stäng av

MGHH 35/70/75/100/150  
MGHM 50/80  
MGHN 51/52/71/72



NOTE: MGHM 50 AND MGHM 80 ARE TAPPED 230/240 VOLT  
MAXIMUM CABLE LENGTH BETWEEN MGHH BALLAST  
BOXES AND LUMINAIRE WITH METAL HALIDE LAMP IS 1500mm

MGHN 50P/100P



NOTE: MAXIMUM CABLE LENGTH BETWEEN MGHN BALLAST  
BOXES AND LUMINAIRE WITH SDW-T LAMP IS 400mm

Installation should be carried out by a suitably qualified person in accordance with good electrical practice and the appropriate national wiring regulations.  
Switch off mains electrical supply before commencing installation.

### INSTALLATION PROCEDURE

Loosen cover fixing screws (G) and remove cover (A).

Prepare suitable fixings in mounting surface at 300mm centres and partially screw in suitable round headed screws.

Locate ballast box fixing holes over screws, insert slip washers (H) under screw heads and tighten screws.

Pierce grommets (D) and (K).

Pass mains supply cable (J) through grommet (K) and connect leads to respectively marked terminals in fused terminal block (L).

Pass lamp supply cable (E) through grommet (D) and cable clamp (C) and connect leads in respectively marked terminals in terminal block (B). Tighten cable clamp screws.

Ensure voltage tapping lead (F) is connected in appropriate mains voltage terminal in terminal block (B).

Re-fit cover (A) and tighten cover fixing screws (G).

**WARNING: THIS UNIT MUST BE EARTHED**

Suitable for use indoors  
Geeignet für Innenanwendung  
Pour un usage interne  
Adecuada para uso en interiores  
Geschikt voor gebruik binnen  
Lämplig för inomhusbruk



This Electrical Product  
MUST be recycled.



< Millimetres >

# Concord:marlin

Avis Way Newhaven East Sussex BN9 0ED  
T 0870 606 2030 F 01273 512 688 email: information@concordmarlin.com



© Concord Lighting Ltd.