

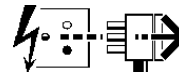
# Skyline Arm Accessory

Installation Instructions **IS500** This Product **MUST** be EARTHED

# IS5262

4041070 4164938 4041069 4163563 4165432  
4041072 4041071 4148273 4148272 4049493  
4158223 4160796 4163730

**Disconnect from mains supply before replacing the fuse or the lamp.**  
Vor dem Einsetzen der Sicherung oder der Lampe Spannungsfreiheit herstellen.  
**Débrancher le secteur avant de remplacer le fusible ou l'ampoule.**  
Desconectar del suministro de la red, antes de realizar la sustitución del fusible o de la lámpara.  
**Voor het vervangen van lamp of zekering, eerst netspanning uitschakelen.**  
Koppla bort spänningen före byte av en säkring eller en lampa.



**Switch Off**  
Abschalten  
**Débrancher**  
Desconectar  
**Uitschakelen**  
Stäng av

Installation should be carried out by a suitably qualified person in accordance with good electrical practice and the appropriate national wiring regulations.

Switch off mains electrical supply before commencing installation.

### Installation Procedure

Prepare suitable fixings in mounting surface and secure mounting boxes (A&G) in position using suitable fixing screws.

Fit cover (B) to top mounting box.

Remove a blanking plug from bottom mounting box (G) and fit cable gland, pyro or 20mm conduit components, ensuring a watertight connection is made by using a suitable sealant.

Feed mains supply cable through connector. Connect supply leads to respective terminals in terminal block, and earth lead to earth terminal.

Pass cable from arm (N) through spacer (J) and cover (H).

Place top spacer (C) on cover boss and assemble arm on spacer using supplied bolt (D), slip washer (E) and saddle washer (F).

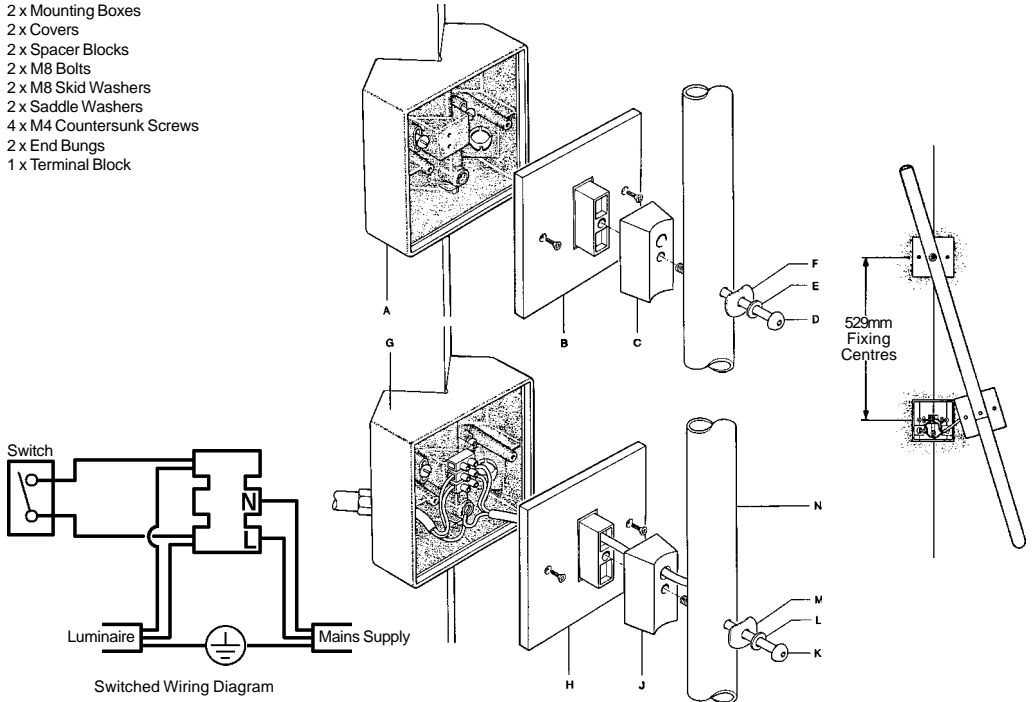
Screw bolt in a few turns only to allow arm to be swung to side as shown for wiring connections to be made.

Connect cable leads to respective terminals in terminal block and earth terminal.

Secure arm in position using supplied bolt (K), slip washer (L) and saddle washer (M). Tighten top bolt.

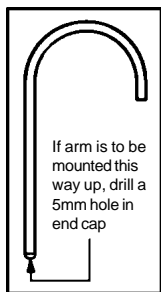
### SKYAX Checklist:

- 1 x Curved Tubular Arm
- 2 x Mounting Boxes
- 2 x Covers
- 2 x Spacer Blocks
- 2 x M8 Bolts
- 2 x M8 Skid Washers
- 2 x Saddle Washers
- 4 x M4 Countersunk Screws
- 2 x End Bungs
- 1 x Terminal Block

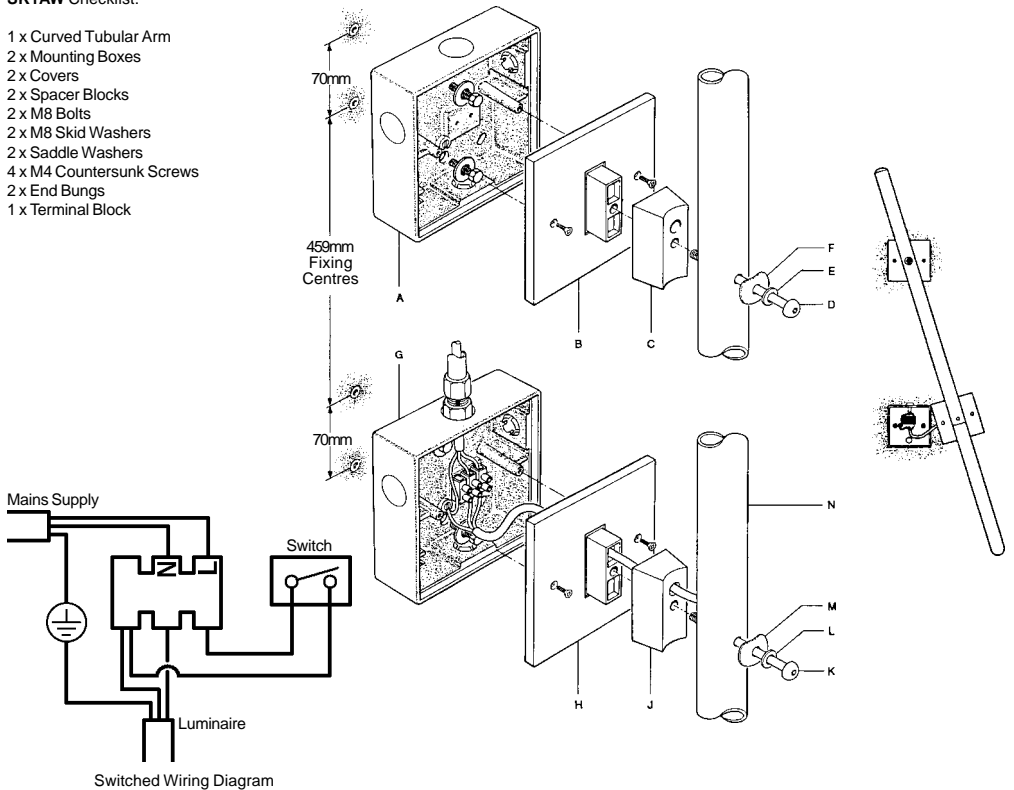


### SKYAW Checklist:

- 1 x Curved Tubular Arm
- 2 x Mounting Boxes
- 2 x Covers
- 2 x Spacer Blocks
- 2 x M8 Bolts
- 2 x M8 Skid Washers
- 2 x Saddle Washers
- 4 x M4 Countersunk Screws
- 2 x End Bungs
- 1 x Terminal Block



If arm is to be mounted this way up, drill a 5mm hole in end cap



**Suitable for use indoors**  
Geeignet für Innenanwendung  
**Pour un usage interne**  
Adecuada para uso en interiores  
**Geschikt voor gebruik binnen**  
Lämplig för inomhusbruk



**Replace any cracked protective shield.**

Dieses symbol bedeutet, dass defekte Schutzgläser sofort ersetzt werden müssen.

**Ce symbole indique que vous devez remplacer tout verre de protection fêlé.**

Este símbolo indica que hay que reemplazar filtros en caso de rotura o desperfectos.

**Dette symbolet indikerer at alle ødelagte (sprukne) sikkerhetsglass må skiftes.**

Valaisinta ei saa käyttää ilman suojalasiasa vioitunut suojalasi on vaihdettava uuteen ennen valaisimen käyttöön ottoa.

< Millimetres >



This Electrical Product **MUST** be recycled.



03.08

# Concord

Avis Way Newhaven East Sussex BN9 0ED  
T 0870 606 2030 F 01273 512 688 email: information@concordmarlin.com

