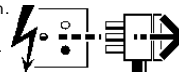
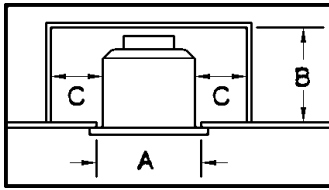


4158090 4160324 4160738 4160773 4160815
 4164585 4044984 4044986 4063973 4147771
 4147773 4147774 4147775 4158087 4160739
 4160772 4160813 4160814 4162316 4163080
 4165422 4147772 4158088 4044988 4044990
 4063975 4158091 4161237 4161272 4164149
 4158090 4160324 4160773 4160815 4164585
 4165204

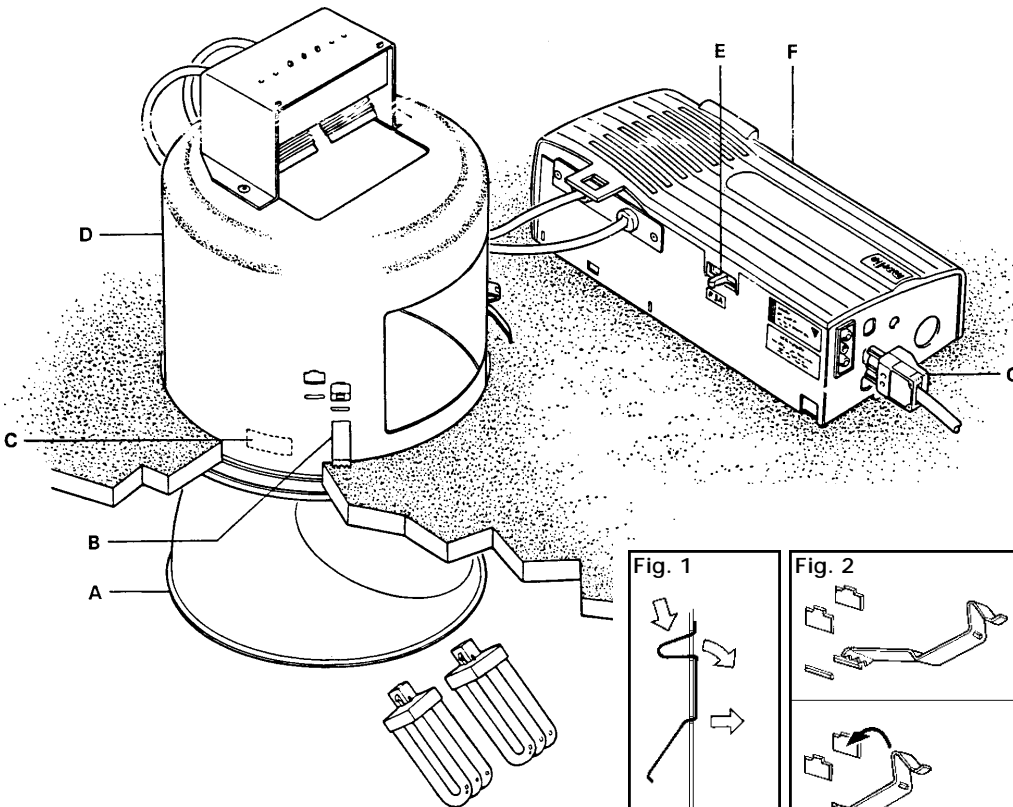
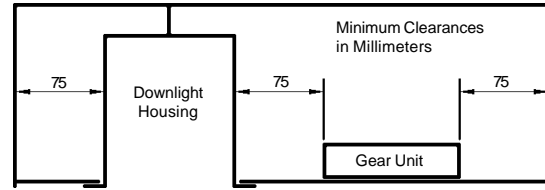
Disconnect from mains supply before replacing the fuse or the lamp.
 Vor dem Einsetzen der Sicherung oder der Lampe Spannungsfreiheit herstellen.
Débrancher le secteur avant de remplacer le fusible ou l'ampoule.
 Desconectar del suministro de la red, antes de realizar la sustitución del fusible o de la lámpara.
Voor het vervangen van lamp of zekering, eerst netspanning uitschakelen.
 Koppla bort spänningen före byte av en säkring eller en lampa.



Switch Off
 Abschalten
Débrancher
 Desconectar
Uitschakelen
 Stäng av



	A	B	C
2 x 26W	200	190	75
2 x 32W	225	210	75



This downlight is suitable for interior ceiling mounting.

NOTE: For recessed enclosure and aperture sizes see diagrams.

Installation should be carried out by a suitably qualified person in accordance with good electrical practice and the appropriate national wiring regulations.

Switch off mains electrical supply before commencing installation.

Installation Procedures

Prepare aperture in mounting surface.

Remove reflector (A) and check rating marked on label (C) conforms with mains electrical supply.

Remove mounting clips (B) from reflector housing (D) as shown in Fig. 1.

Remove plug (G) from gear unit (F) and connect switched mains supply to plug as shown in Fig. 3.

Insert plug (G) in gear unit socket.

Place gear unit (F) through ceiling aperture.

Refer to table on left and secure housing (D) in ceiling aperture with mounting clips (B) as shown in Fig. 2.

Fit reflector (A) in housing (D), ensuring that rubber is positioned on end of screw as shown in Fig. 4.

Fit supplied lamps.

NOTE: Luminaire is protected by a 3A fuse (E).

WARNING: To retain CE compliance, interconnecting cables between luminaire and gear unit must not be extended.

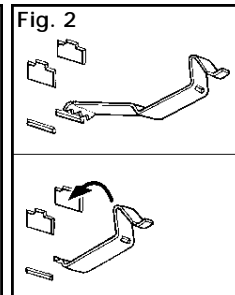
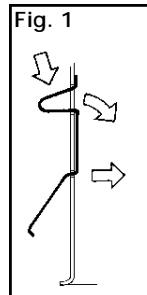
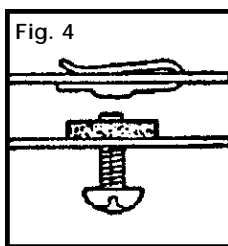
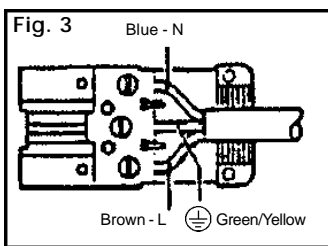
WARNING: Luminaire must be earthed.

WARNING: Do not insulation test.

NOTE: This luminaire should be cleaned using warm soapy water and a soft cloth - ensure luminaire is switched off during cleaning.

LAMPS: For optimum performance Concord recommend that PHILIPS PL-T lamps are used in this luminaire.

Dispose of lamps in accordance with manufacturer's instructions.



Trim Type	Ceiling Thickness (mm)	Fixing Slot
Flat	5 - 16	Bottom
	16 - 31	Top
Profile	1 - 10	Bottom
	10 - 25	Top

To avoid flexing of sheet metal tiles use a 6mm backing board.

Suitable for use indoors
 Geeignet für Innenanwendung
 Pour un usage interne
 Adecuada para uso en interiores
 Geschikt voor gebruik binnen
 Lämplig för inomhusbruk



Replace any cracked protective shield.

Dieses symbol bedeutet, dass defekte Schutzgläser sofort ersetzt werden müssen.

Ce symbole indique que vous devez remplacer tout verre de protection fêlé.

Este símbolo indica que hay que reemplazar filtros en caso de rotura o desperfectos.

Dette symbolet indikerer at alle ødelagte (sprukne) sikkerhetglass må skiftes.

Valaisinta ei saa käyttää ilman suojalasia vioitunut suojalasi on vaihdettava uuteen ennen valaisimen käyttöön ottoa.

< Millimetres >



This Electrical Product
MUST be recycled.



01.08