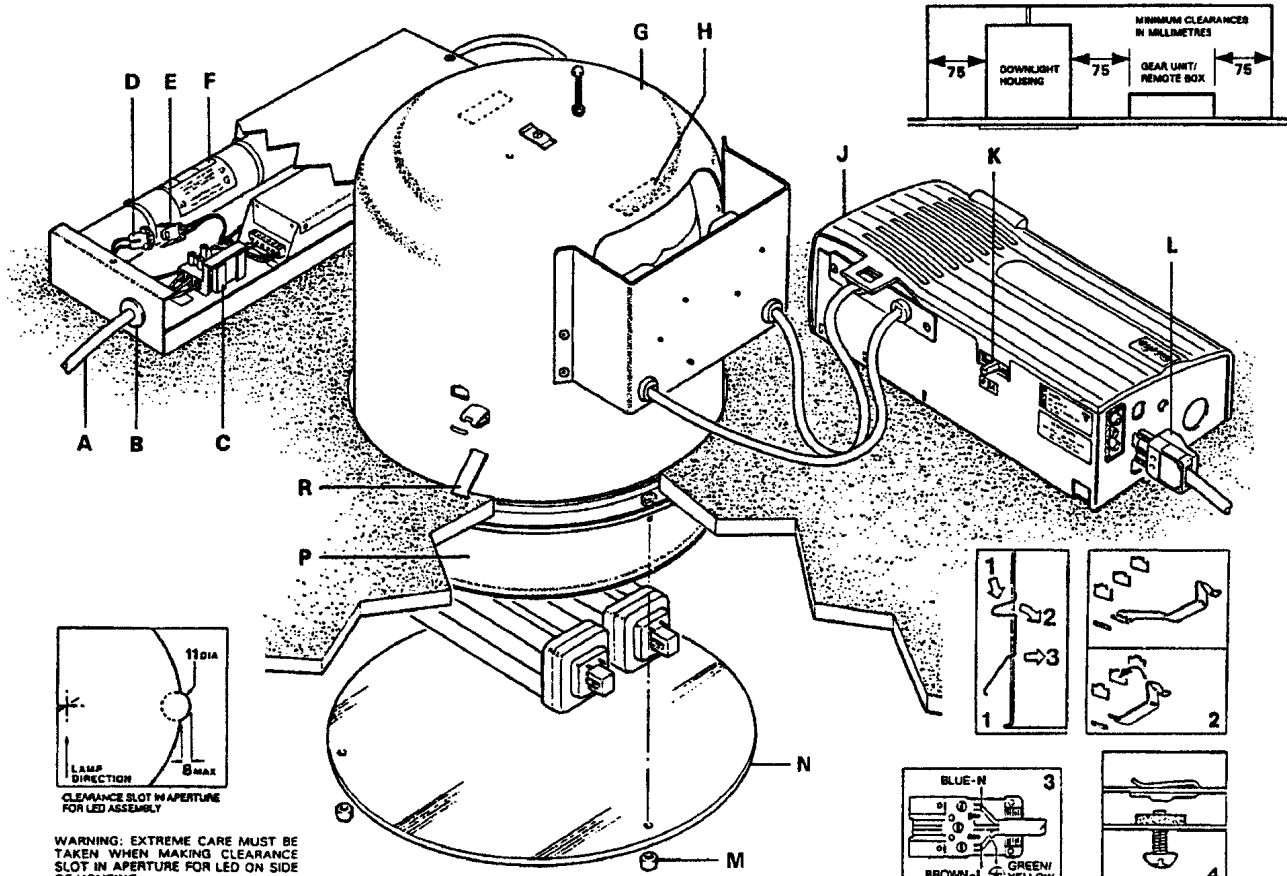


**Disconnect from mains supply before replacing the fuse or the lamp.**  
 Vor dem Einsetzen der Sicherung oder der Lampe Spannungsfreiheit herstellen.  
**Débrancher le secteur avant de remplacer le fusible ou l'ampoule.**  
 Desconectar del suministro de la red, antes de realizar la sustitución del fusible o de la lámpara.  
**Voor het vervangen van lamp of zekering, eerst netspanning uitschakelen.**  
 Koppla bort spänningen före byte av en säkring eller en lampa.



**Switch off**  
 Abschalten  
**Débrancher**  
 Desconectar  
**Uitschakelen**  
 Stäng av

**USE SUPPLIED POLYTHENE GLOVE WHEN HANDLING REFLECTOR AND LAMP**



**WARNING: EXTREME CARE MUST BE TAKEN WHEN MAKING CLEARANCE SLOT IN APERTURE FOR LED ON SIDE OF HOUSING**

This luminaire is suitable for ceiling mounting and is designed for sustained/combined emergency operation with a duration of 3 hours.

The downlight requires a 250mm diameter aperture and a recess depth of 215mm. **NOTE:** For recessed enclosure refer to diagram above.

Installation should be carried out by a suitably qualified person in accordance with good electrical practice and the appropriate national wiring regulations.

Switch off mains electrical supply before commencing installation.

**INSTALLATION PROCEDURE**

Remove retaining knobs (M) and protective glass cover (N).

Remove reflector (P) and check rating marked on label (H) conforms with mains electrical supply.

Remove mounting clips (R) from reflector housing as shown in Fig.1.

Remove plug (L) from gear unit (J) and connect SWITCHED MAINS SUPPLY to plug as shown in Fig.3.

Remove remote box cover, pierce grommet (B), feed 3-core cable (A) from UNSWITCHED MAINS SUPPLY through grommet and connect leads in respectively marked terminals in fused terminal block (C).

Enter supply connection date on battery pack

label (F).

Connect battery socket (D) and plug (E).

Re-fit remote box cover.

Insert plug (L) in gear unit socket.

Place remote box and gear unit through ceiling aperture.

Refer to table on right and secure housing (G) in ceiling aperture with mounting clips (R) as shown in Fig.2.

Fit reflector (P) in housing (G), ensuring that rubber washer is positioned on end of screw as shown in Fig.4.

Fit supplied lamps.

Replace protective cover (N) and secure with retaining knobs (M).

**NOTE:** Luminaire protected by 3A fuse (K).

**TESTING**

Switch on mains supply and check that charge indicator lamp is on.

Leave luminaire on continuous charge for 24 hours.

Simulate mains failure, and check that lamp operates for 3 hours. If full duration of 3 hours is not achieved, repeat charge/discharge cycle as battery packs may have discharged in stock and will require conditioning.

TRIM TYPE	CEILING THICKNESS (mm)	FIXING SLOT
FLAT	5 - 16	BOTTOM
	16 - 31	TOP
PROFILE	1 - 10	BOTTOM
	10 - 25	TOP

**TO AVOID FLEXING OF SHEET METAL TILES USE A 6mm BACKING BOARD**

**MAIN LAMPS**  
 FOR OPTIMUM PERFORMANCE MARLIN RECOMMEND THE USE OF PHILIPS PL-T LAMPS

**EMERGENCY LAMP**  
 5W PLS (4 PIN) NON AMALGAM

**IP44 RATING - WITH PROTECTIVE GLASS COVER FITTED, ANY MOUNTING SURFACE MUST BE CLOSED TO PREVENT INGRESS OF WATER INTO CEILING VOID FROM BELOW**

**WARNING: LUMINAIRE MUST BE EARTHED**

**WARNING: DO NOT INSULATION TEST**

**NOTE: THIS LUMINAIRE SHOULD BE CLEANED BY USING WARM SOAPY WATER AND A SOFT CLOTH - ENSURE LUMINAIRE IS SWITCHED OFF DURING CLEANING**

**DISPOSE OF LAMPS IN ACCORDANCE WITH LAMP MANUFACTURER'S INSTRUCTIONS**

Suitable for use Indoors  
 Geeignet für innenanwendung  
 Pour un usage Interne

Adecuada para uso en interiores  
 Geschikt voor gebruik binnen  
 Lämpfilg för inomhusbruk

This Electrical Product MUST be recycled.

