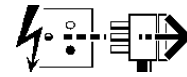
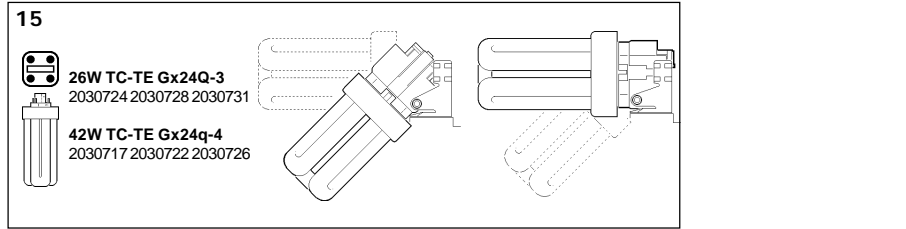
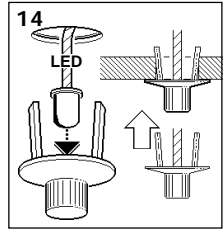
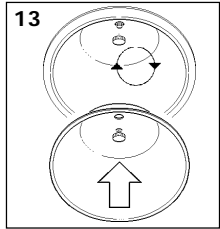
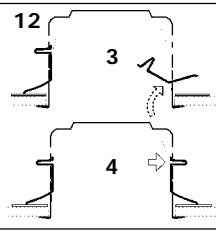
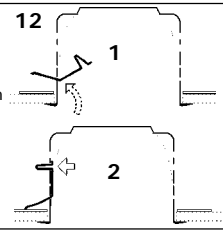
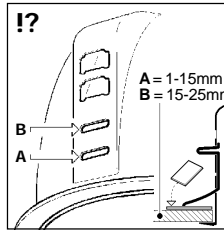
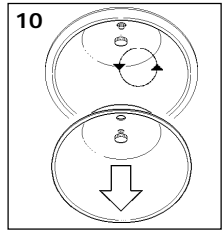
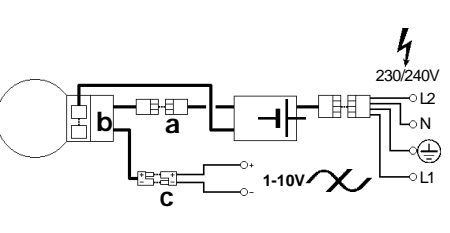
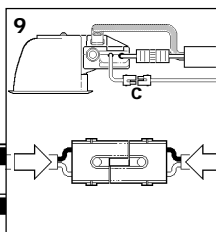
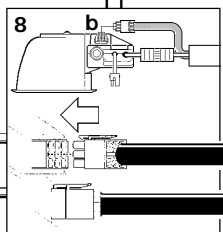
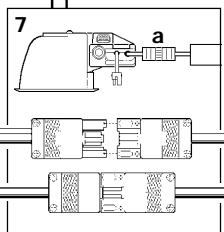
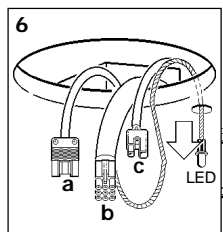
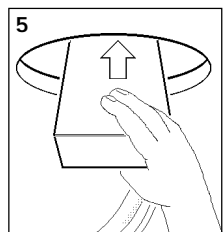
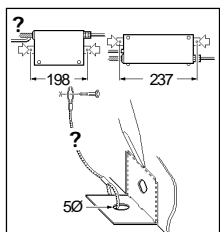
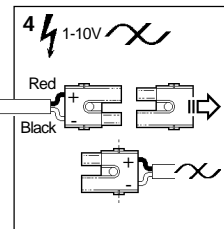
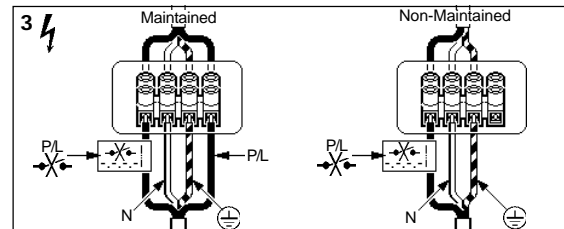
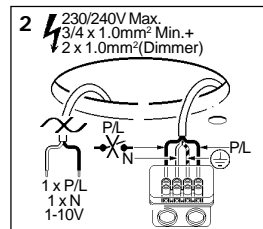
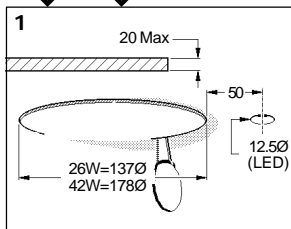
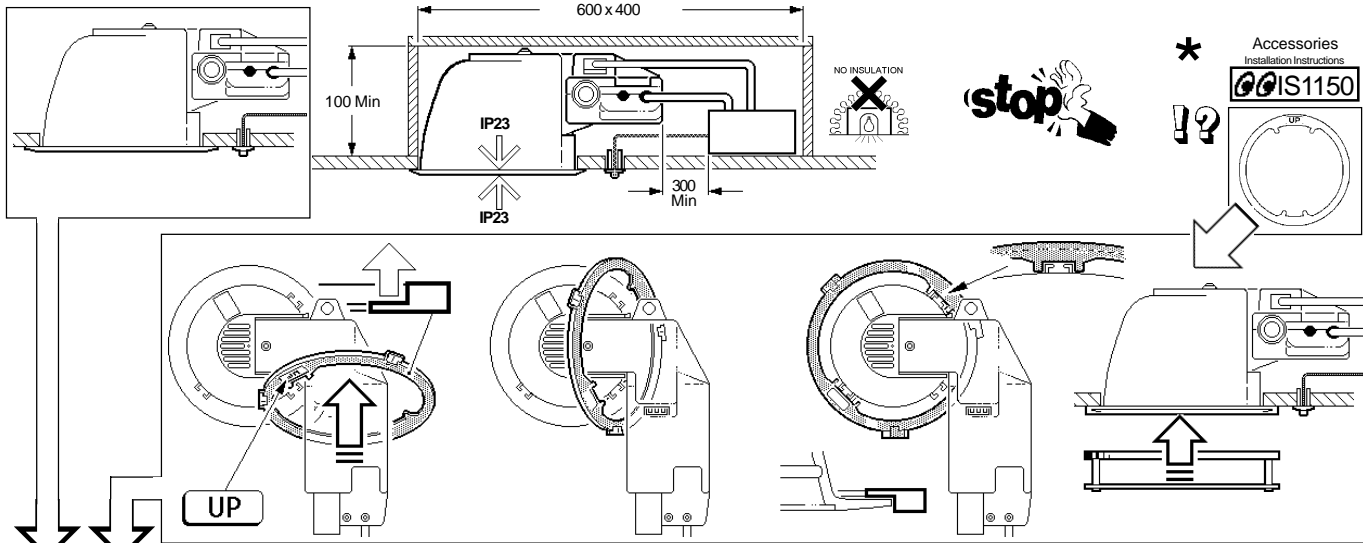


Eco  
26W - 2030728  
42W - 2030726  
Deco  
26W - 2030724  
42W - 2030722  
Architectural  
26W - 2030731  
42W - 2030717

**Disconnect from mains supply before replacing the fuse or the lamp.**  
Vor dem Einsetzen der Sicherung oder der Lampe Spannungsfreiheit herstellen.  
**Débrancher le secteur avant de remplacer le fusible ou l'ampoule.**  
Desconectar del suministro de la red, antes de realizar la sustitución del fusible o de la lámpara.  
**Voor het vervangen van lamp of zekering, eerst netspanning uitschakelen.**  
Koppla bort spänningen före byte av en säkring eller en lampa.



**Switch Off**  
Abschalten  
**Couper le connectar**  
Desconectar  
**Uitschakelen**  
Stäng av



**13/18/26W**  
YUASA NP2.3-12  
12V,2.3Ah SLA  
**32/42W**  
YUASA NP7-12  
12V,7.0Ah SLA

$I = 24\text{Hrs}$

(A period of 24 Hours must be allowed for the charging of the emergency batteries on max.voltage.)

**Initial Testing**

1.) Switch on the mains supply and check that the charge indicator lamp (LED) is ON - Leave the luminaire on continuous charge for 24hours. Simulate mains supply failure, and check that the emergency lamp operates for 3 hours. If a full duration of 3 hours is NOT achieved, repeat the charge/discharge cycle, as the battery packs may have been discharged in storage and will require conditioning!

2.) **DO NOT SWITCH OFF THE LUMINAIRES UNSWITCHED SUPPLY AFTER INSTALLATION**, as the unswitched supply **MUST** be maintained. If an interruption to the supply is unavoidable, the batteries **MUST** be disconnected or damage to the battery and/or the lamp may be incurred.

**\* ATTENTION**  
Fit Accessory Ring to luminaire, **ONLY** if an LED100 & LED150 'Architectural' accessory is to be fitted.

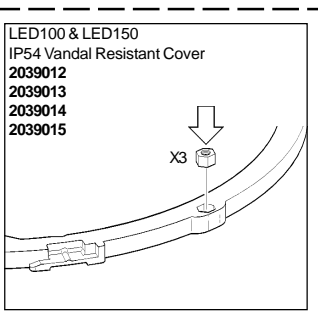
**ACHTUNG**  
Bei Verwendung von 'architectural' Abschlussmitteln muss der Zubehörring vor der Leuchtenmontage ans Leuchtgehäuse angebracht werden.

**ATTENTION**  
Lors l'utilisation d'un anneau de finition 'architectural', la bride d'accessoire doit être fixée au boîtier avant le montage du luminaire.

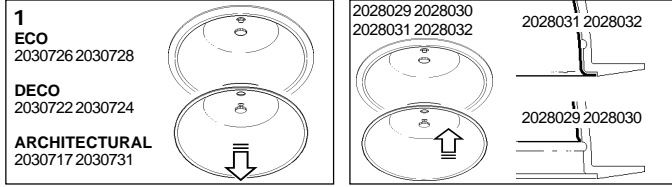
**ATENCIÓN**  
Poner el aro en la luminaria, solo si se va a figur un accesorio decorativo.

**ATTENZIONE**  
Montare de accessorierand op het armatuur, **ALEEN** indien een 'architectural' accessoire gemonteerd dient te worden.

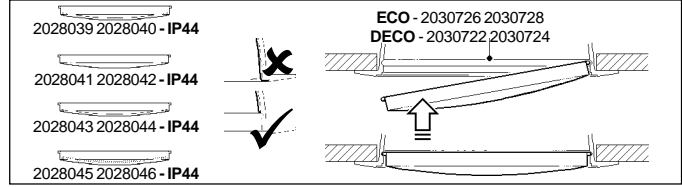
**OBSERVERA**  
Montera tillbehöringen på armaturen, **ENDAST** om något tillbehör skall monteras på armaturen.



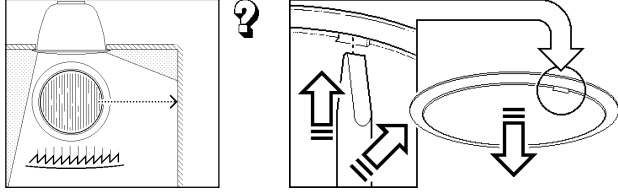
2028029 2028030 2028031 2028032



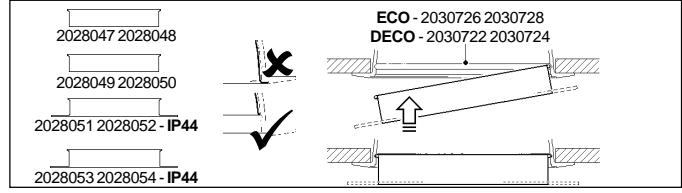
2028039 2028040 2028041 2028042 2028043 2028044 2028045 2028046



2028045 2028046



2028047 2028048 2028049 2028050 2028051 2028052 2028053 2028054

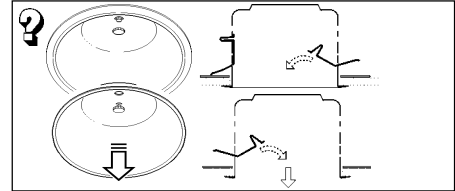


**Routine Maintenance**

Routine maintenance must be carried out in compliance with the requirements of BS5266:Part 1 - Emergency Lighting of Premises.

The following tests assume a three-hour system.

- Daily:**
1. Check that any recorded faults have been rectified.
  2. Check that the maintained emergency lamp is operative.
  3. Check that the charge indicator light is illuminated.
- Monthly: (Functional)**
1. Simulate a mains failure and check that the emergency lamp illuminates and remains on for several minutes.
  2. After reverting back to mains supply check the charge indicator light is illuminated.
- Six Monthly: (1 Hour)**
1. Simulate a mains failure and check that the emergency lamp illuminates and remains on for one hour.
  2. After reverting back to mains supply check the charge indicator light is illuminated.
  3. On restoring the mains supply the unit will require approximately 24 hours to recharge before becoming fully operational.
- Three Years: (3 Hours)**
1. Simulate a mains failure and check that the emergency lamp illuminates and remains on for at least 3 hours.
  2. After reverting back to mains supply check the charge indicator light is illuminated.
  3. On restoring the mains supply the unit will require approximately 24 hours to recharge before becoming fully operational.



It is recommended that the battery packs and lamps are replaced every 4 years or sooner if the units performance fails to meet the above requirements. To maintain optimum unit performance, only approved replacement battery packs and lamps must be used.

All routine maintenance checks must be recorded on the unit Routine Test Record and must be made available for inspection at all times.

**Installation and Commissioning Record**

Luminaire Model Ref: \_\_\_\_\_ Location: \_\_\_\_\_  
 Installed By: \_\_\_\_\_ Date: \_\_\_\_\_  
 Commissioned by: \_\_\_\_\_ Date: \_\_\_\_\_  
 (Full Charge and Discharge Cycle)

**Routine Test Record**

Monthly Test	First Year		Second Year		Third Year		Forth Year		Fifth Year	
	Signed	Dated	Signed	Dated	Signed	Dated	Signed	Dated	Signed	Dated
Functional										
Functional										
Functional										
Functional										
Functional										
1 Hour Duration										
Functional										
Functional										
Functional										
Functional										
Functional										
1 Hour Duration										
3 Hour Duration										

**LUMINAIRE SPACING - for 1 Lux Emergency Lighting**

Mounting Height	Amalgam Lamps					Non-Amalgam Lamps				
	2M	2.5M	3M	4M	6M	2M	2.5M	3M	4M	6M
<b>Eco</b> (Between Luminaires - Axial to Axial)										
2030728 - White	6.15	6.88	7.47	8.31	8.79	6.26	7.01	7.62	8.51	9.12
2030726 - White	7.33	8.27	9.05	10.24	11.41	8.12	9.19	10.12	11.61	13.47
<b>Architectural</b> (Between Luminaires - Axial to Axial)										
2030731 - Silver	6.24	7.33	8.25	9.52	9.70	6.31	7.42	8.36	9.71	10.13
2030717 - Silver	7.75	9.07	10.20	11.78	12.17	8.27	9.77	11.08	13.25	15.40
<b>Eco</b> (Luminaire to Wall - Axial to Wall)										
2030728 - White	2.54	2.79	2.97	3.12	2.54	2.59	2.86	3.05	3.22	2.76
2030726 - White	3.07	3.41	3.67	3.99	3.84	3.42	3.84	4.18	4.66	4.98
<b>Architectural</b> (Luminaire to Wall - Axial to Wall)										
2030731 - Silver	2.76	3.15	3.42	3.51	2.63	2.79	3.21	3.49	3.66	2.82
2030717 - Silver	3.41	3.90	4.23	4.47	3.57	3.69	4.29	4.78	5.38	4.76

**Suitable for use indoors**

Geeignet für Innenanwendung  
 Pour un usage interne  
 Adecuada para uso en interiores  
 Geschikt voor gebruik binnen  
 Lämpelig för inomhusbruk



**Replace any cracked protective shield.**

Dieses symbol bedeutet, dass defekte schutzgläser sofort ersetzt werden müssen.  
**Ce symbol indique que vous devez remplacer tout verre de protection fêlé.**  
 Este simbolo indica que hay que reemplazar filtros en caso de rotura o desperfectos.  
**Dette symbolet indikerer at alle ødelagte (sprukne) sikkerhetglass må skiftes.**

Valaisinta el saa käyttää ilman suojalasia vioittunut suojalasi on vaihdettava uuteen ennen valaisimen käyttöön ottoa.

< Millimetres >

This Electrical Product MUST be recycled.



**Concord**

Avis Way Newhaven East Sussex BN9 0ED  
 T 0870 606 2030 F 01273 512 688 email: information@concordmarlin.com



© Concord Lighting Ltd.